

COMMANDER 2003

Commander



Life is good!



*The little
things make
a **big**
difference*

CHASE THE SUN. CROSS THE COUNTRY.

VISIT ORCHARDS, MOUNTAINS, POPULAR

LANDMARKS, AND LONG LOST FRIENDS.

SURRENDER TO YOUR SENSES AND

DISCOVER WHAT FREEDOM FEELS LIKE.



A3509FB shown with Pecan Decor



A bedroom slide out brings versatility to the room.



Captain's chairs swivel to a comfortable living area.



You'll find storage in easily accessible, nonobtrusive places.

NO SHORTCUTS

What's so appealing about the RV lifestyle? The Commander makes it clear. From skylights and ceiling fans right down to the gleaming hardwood flooring, this vehicle celebrates the leisure time you've earned for yourself.

With a full featured, well-organized kitchen and plush recreational area with 20-inch remote TV, there's no better way to be home away from home. But before you start customizing destinations, consider the options!

Choose from six floorplans and select from three décors. In addition, you'll need to consider the add ons that will best suit your fancy. The following are just a few of what's available to you:

- » ultra leather chairs
- » central vacuum
- » solid oak table and chairs

Whatever you decide, the Commander's luxury will keep you smiling throughout your travels.



The 2003 Commander features a flush floor slide out.

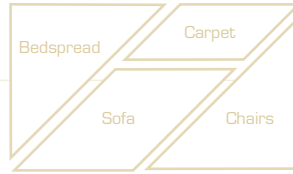


For more information on the Commander's features, visit our website at www.tripleerv.com



The automotive style dash keeps the driving comfortable and familiar.

Your Decor



ALONG WITH YOUR CHOICE OF SIX FLOORPLANS AND A HOST OF OPTIONS, FURTHER CUSTOMIZE YOUR MOTORHOME WITH ONE OF THREE DISTINCT INTERIOR DESIGN SCHEMES. SELECTED BY A GROUP OF PROFESSIONALS, THE COMBINATIONS SKILLFULLY COORDINATE UPHOLSTERY, CARPETING, WINDOW TREATMENTS, AND EXTERIOR GRAPHICS.



Solid oak raised panel cabinetry, found throughout the coach, is both beautiful and durable.



SIERRA SUNSET



HARBOR BLUE



LAMBSWOOL



HORIZON



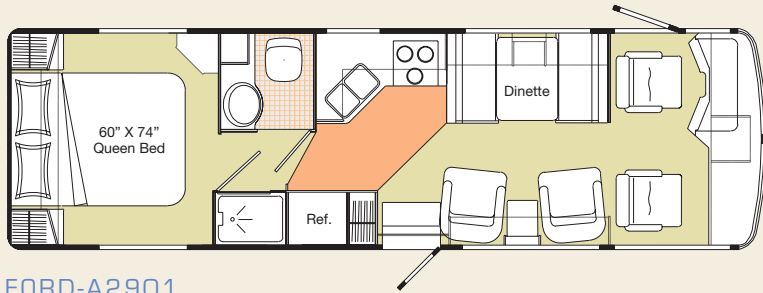
PECAN



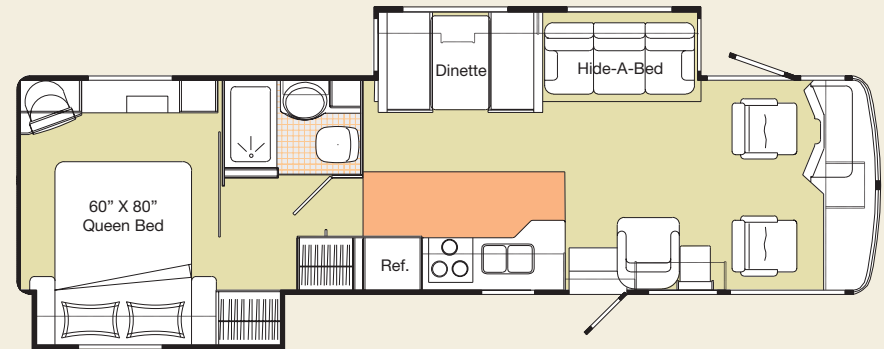
Please refer to our web site at www.tripleerv.com for more detailed explanations of our options.

Colors may not be exactly as shown due to the printing process. Please see your dealer for specific colors.

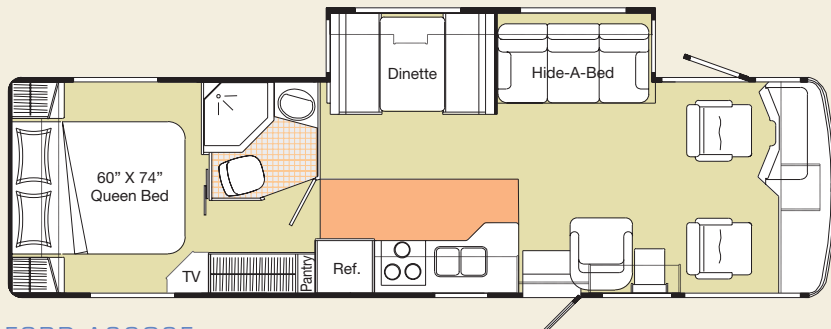
FLOORPLANS



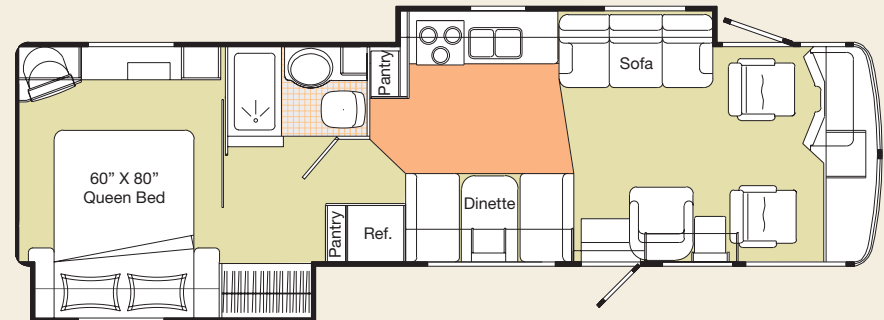
FORD-A2901



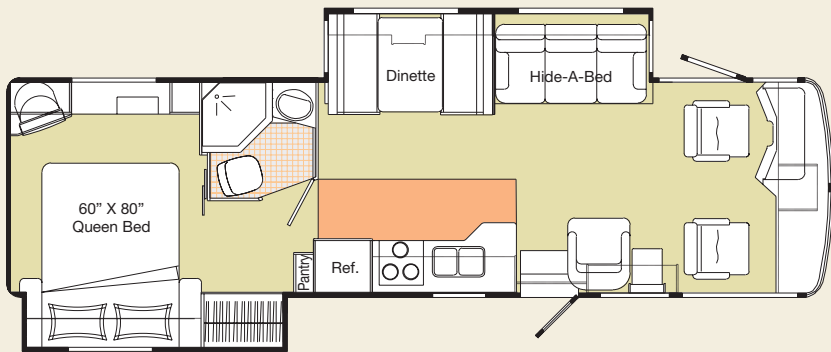
FORD-A3509FB
New WORKHORSE-A3519FB



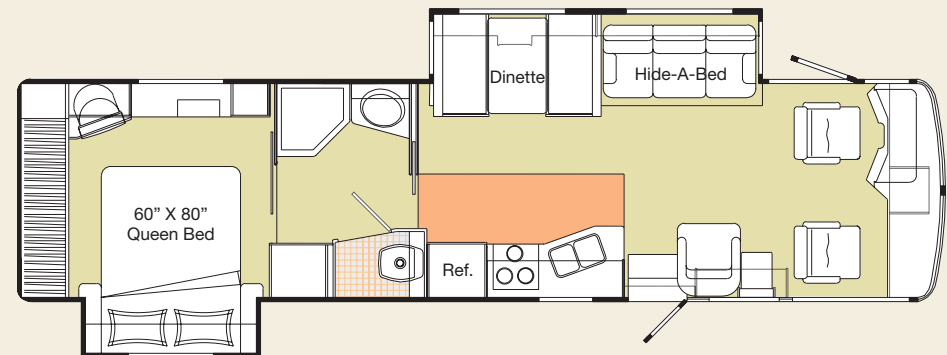
FORD-A3202F



New FORD-A3510GB
New WORKHORSE-A3511GB



New FORD-A3202FB



New FORD-A3601FB
New WORKHORSE-A3611FB

New - New for 2003



STANDARDS AND OPTIONS

S = Standard O = Option **New** = New for 2003

A2901
A3202F
A3202FB
A3509FB
A3510GB
A3601FB
A3519FB
A3511GB
A3611FB

VEHICULAR

Air Conditioner - Chassis	S	S	S	S	S	S	S	S	S	S	S	S	S	S	S
Airbag Assist Suspension - Front	O	O	O	O	O	O	-	-	-	-	-	-	-	-	-
Airbag Assist Suspension - Rear	S	S	S	S	S	S	S	S	S	S	S	S	S	S	S
Alternator - 130 Amp	S	S	S	S	S	S	S	S	S	S	S	S	S	S	S
Block Heater	S	S	S	S	S	S	S	S	S	S	S	S	S	S	S
Bumper - Integrated Fiberglass Rear Bumper - Steel Reinforced	S	S	S	S	S	S	S	S	S	S	S	S	S	S	S
Chassis - Ford 6.8 L V-10 Triton 18,000 lb. GVW - 245/70R19.5 Tires	S	-	-	-	-	-	-	-	-	-	-	-	-	-	-
Chassis - Ford 6.8 L V-10 Triton 20,500 lb. GVW - 245/70R19.5 Tires	-	-	-	-	-	-	-	-	-	-	-	-	-	-	-
Chassis - Ford 6.8 L V-10 Triton 22,000 lb. GVW - 245/70R19.5 Tires	-	S	S	S	S	S	-	-	-	-	-	-	-	-	-
New Chassis - Workhorse W22, 22,000 lb. GVW, 8.1 Vortec - 235/80R22.5 Tires	-	-	-	-	-	-	S	S	S	S	-	-	-	-	-
Compass/Thermometer -															
Dash Mounted Directional Compass with Exterior Temperature Readout	O	O	O	O	O	O	O	O	O	O	O	O	O	O	O
Cruise Control and Tilt Steering Wheel	S	S	S	S	S	S	S	S	S	S	S	S	S	S	S
Door - Driver's c/w Power Window	S	S	S	S	S	S	S	S	S	S	S	S	S	S	S
Fans - Chrome Cockpit Ventilating with Dash Switch	O	O	O	O	O	O	O	O	O	O	O	O	O	O	O
Headlights - Halogen	S	S	S	S	S	S	S	S	S	S	S	S	S	S	S
Hitch - Trailer Hitch Receiver w/ Wiring and Plug - Class III	S	S	S	S	S	S	S	S	S	S	S	S	S	S	S
Jacks - HWH Hydraulic Leveling Jacks with Touchpad Control	O	S	S	S	S	S	S	S	S	S	S	S	S	S	S
Light - High Mount Stoplight - LED Long Life	S	S	S	S	S	S	S	S	S	S	S	S	S	S	S
Lights - Halogen Automotive Driving Lights	S	S	S	S	S	S	S	S	S	S	S	S	S	S	S
Mats - Driver/Passenger Floor Mats	S	S	S	S	S	S	S	S	S	S	S	S	S	S	S
Mirrors - Heated Remote	S	S	S	S	S	S	S	S	S	S	S	S	S	S	S
Rust Protection	O	O	O	O	O	O	O	O	O	O	O	O	O	O	O
Slide Out - Flat Floor HWH Hydraulic Flush Floor Slide Out System	-	S	S	S	-	S	-	S	-	S	-	S	-	S	-
Slide Out - HWH Hydraulic Slide Out System	-	-	-	-	S	-	-	S	-	-	-	S	-	-	-
Spare Tire and Wheel	S	S	S	S	S	S	S	S	S	S	S	S	S	S	S
Switch - Battery Boost (Coach to Chassis Batteries)	S	S	S	S	S	S	S	S	S	S	S	S	S	S	S
Switch - Battery Selector Switch for Radio	S	S	S	S	S	S	S	S	S	S	S	S	S	S	S
Transmission Cooler	S	S	S	S	S	S	S	S	S	S	S	S	S	S	S
Undercoating - Automotive Type	S	S	S	S	S	S	S	S	S	S	S	S	S	S	S
Wheel Simulators w/ Tire Valve Extensions	S	S	S	S	S	S	S	S	S	S	S	S	S	S	S
Wipers - Wet Arm Windshield Wipers c/w Intermittent Function	S	S	S	S	S	S	S	S	S	S	S	S	S	S	S

CONSTRUCTION

Baggage Doors - Aluminium Baggage Doors c/w Gas Struts and Slam Latch	S	S	S	S	S	S	S	S	S	S	S	S	S	S	S
Gel Coat Fiberglass Front & Rear Masks	S	S	S	S	S	S	S	S	S	S	S	S	S	S	S
Lined and Lighted Baggage Compartments	S	S	S	S	S	S	S	S	S	S	S	S	S	S	S
Rain Gutters c/w Down Spouts	S	S	S	S	S	S	S	S	S	S	S	S	S	S	S
Roof - Domed EPDM Rubber Roof	S	S	S	S	S	S	S	S	S	S	S	S	S	S	S
Steel Cab Floor, Firewall, and Dash Structure	S	S	S	S	S	S	S	S	S	S	S	S	S	S	S
Vacuum Bonded Aluminium Framed Insulated Sidewall and Roof Construction with Thermal Break	S	S	S	S	S	S	S	S	S	S	S	S	S	S	S
Vacuum Bonded Gel Coat Fiberglass Sidewalls	S	S	S	S	S	S	S	S	S	S	S	S	S	S	S
Vacuum Bonded Steel Framed, Insulated Floor Construction	S	S	S	S	S	S	S	S	S	S	S	S	S	S	S
Windows - Thermal Pane	S	S	S	S	S	S	S	S	S	S	S	S	S	S	S

EXTERIOR

Concealed Locking Fuel Fill Access	S	S	S	S	S	S	S	S	S	S	S	S	S	S	S
Door - Screened Entry Door w/ Stud Shield and Deadbolt Lock	S	S	S	S	S	S	S	S	S	S	S	S	S	S	S
Exterior Assist Handle - Monogrammed	S	S	S	S	S	S	S	S	S	S	S	S	S	S	S
Exterior Shower	S	S	S	S	S	S	S	S	S	S	S	S	S	S	S
Ladder - Exterior Ladder c/w Detachable Lower Section	O	O	O	O	O	O	O	O	O	O	O	O	O	O	O

A2901
A3202F
A3202FB
A3509FB
A3510GB
A3601FB
A3519FB
A3511GB
A3611FB

Light - Patio	S	S	S	S	S	S	S	S	S	S	S	S	S	S	S
Lights - Rear Mounted Docking	O	O	O	O	O	O	O	O	O	O	O	O	O	O	O
Step - Double Electric Retractable	S	S	S	S	S	S	S	S	S	S	S	S	S	S	S
Winter Front Close Out Package	O	O	O	O	O	O	O	O	O	O	O	O	O	O	O

INTERIOR

Bedsread - Decorative Bedsread with Throw Pillows	S	S	S	S	S	S	S	S	S	S	S	S	S	S	S
Blinds - Driver's and Passenger's Side Roller	O	O	O	O	O	O	O	O	O	O	O	O	O	O	O
Cabinets - Solid Oak Cabinet Face Framing	S	S	S	S	S	S	S	S	S	S	S	S	S	S	S
Ceiling - Domed with Automotive "Soft Touch" Headliner	S	S	S	S	S	S	S	S	S	S	S	S	S	S	S
Computer Tray - Passenger's Side	O	O	O	O	O	O	O	O	O	O	O	O	O	O	O
Covers - Insulated Vent Covers	O	O	O	O	O	O	O	O	O	O	O	O	O	O	O
Detectors - Electronic Smoke, LP and CO	S	S	S	S	S	S	S	S	S	S	S	S	S	S	S
Doors - Solid Oak Raised Panel Cabinet Doors	S	S	S	S	S	S	S	S	S	S	S	S	S	S	S
Drawers - Dual Roller Glide Drawers c/w Travel Lock	S	S	S	S	S	S	S	S	S	S	S	S	S	S	S
Drawers - Slide Out Drawer Option in Washer/Dryer Cabinet (N/A with Washer/Dryer Option)	-	-	-	O	-	O	O	-	O	-	O	-	O	-	O
Fire Extinguisher - Dry Chemical	S	S	S	S	S	S	S	S	S	S	S	S	S	S	S
Flooring - Wall to Wall Carpeting in Living Area and Bedroom	S	S	S	S	S	S	S	S	S	S	S	S	S	S	S
Lamps - Courtesy Floor Lamps	S	S	S	S	S	S	S	S	S	S	S	S	S	S	S
Latches - Snap Latches on Galley, Lavatory Overhead Cabinets and Large Wardrobe Doors	S	S	S	S	S	S	S	S	S	S	S	S	S	S	S
Lighting - Fluorescent Lighting Upgrade in Aisle	O	O	O	O	O	O	O	O	O	O	O	O	O	O	O
Lighting - Halogen Lighting Upgrade under Cabinets above Couch and Bed	O	O	O	O	O	O	O	O	O	O	O	O	O	O	O
Shades - Day/Night Pleated c/w Bedroom Blackout	S	S	S	S	S	S	S	S	S	S	S	S	S	S	S
Skylight - with Blind in Living Area	O	O	O	O	O	O	O	O	O	O	O	O	O	O	O
Storage - Easy Under Bed Storage c/w Gas Struts	S	S	S	S	S	S	S	S	S	S	S	S	S	S	S
Sun Visor - Driver's Side Power Sun Visor	O	O	O	O	O	O	O	O	O	O	O	O	O	O	O

FURNITURE

Booth Dinette - w/ Steel Framing for Seat Belts and Solid Surface Edged Table	S	-	-	-	-	-	-	-	-	-	-	-	-	-	-
Booth Dinette - Wrapped Laminated Cushions w/Slide Out Drawers and Solid Surface Edged Table	-	S	S	S	S	S	S	S	S	S	S	S	S	S	S
Cabinet - Refreshment Centre	O	O	O	O	O	O	O	O	O	O	O	O	O	O	O
Chair - Cloth Captain's in Lieu of Cocktail Chair on Passenger's Side	O	O	O	O	O	O	O	O	O	O	O	O	O	O	O
Chair - Cloth Swivel Cocktail with Solid Oak Flip Table	S	S	S	S	S	S	S	S	S	S	S	S	S	S	S
Chair - Ultra Leather Captain's in Lieu of Cocktail Chair on Passenger's Side	O	O	O	O	O	O	O	O	O	O	O	O	O	O	O
Chair - Ultra Leather Cocktail in Lieu of Cloth on Passenger's Side	O	O	O	O	O	O	O	O	O	O	O	O	O	O	O
Hide-A-Bed - on Driver's Side	-	S	S	S	-	S	S	-	S	-	S	-	S	-	S
Magic Bed - on Driver's Side	-	-	-	-	O	-	-	-	O	-	-	-	O	-	-
Mattress - Air Coil Mattress Upgrade on Hide-A-Bed (c/w 110V Air Pump)	-	O	O	O	-	O	O	-	O	-	O	-	O	-	O
New Mattress - Residential Quality Queen (60" x 74")	S	S	-	-	-	-	-	-	-	-	-	-	-	-	-
Mattress - Residential Quality Queen (60" x 80")	-	-	S	S	S	S	S	S	S	S	S	S	S	S	S
Mattress - Upgrade	O	O	O	O	O	O	O	O	O	O	O	O	O	O	O
Seat - Power - Driver Side	O	O	O	O	O	O	O	O	O	O	O	O	O	O	O
Seats - Cloth Swivel Driver's and Passenger's Captain c/w Recline and 3 Point Cockpit Seat Belts	S	S	S	S	S	S	S	S	S	S	S	S	S	S	S
Seats - Ultra Leather Driver's & Passenger's Captains with 3 Point Cockpit Seat Belts	O	O	O	O	O	O	O	O	O	O	O	O	O	O	O
Sofa - Cloth Easybed in Lieu of Cocktail Chairs on Passenger's Side c/w Drawer	O	-	-	-	-	-	-	-	-	-	-	-	-	-	-
Sofa - Cloth Easybed on Driver's Side	-	-	-	-	S	-	-	-	S	-	-	-	S	-	-

STANDARDS AND OPTIONS (CON'T)

S = Standard O = Option **New** = New for 2003

A2901
A3202F
A3202FB
A3509FB
A3510GB
A3601FB
A3519FB
A3511GB
A3611FB

Table - Optional Oak Table & Chairs in Lieu of Booth Dinette (F - Freestanding, W - Wall Mount)	W	F	F	F	W	F	F	W	F
Twin Beds	O	O	-	-	-	-	-	-	-
Versaflex Lounge - Flexsteel® Lounge Sofa on Driver's Side	-	O	O	O	-	O	O	-	O
GALLEY									
Bi fold Range Cover - Recessed	S	S	S	S	S	S	S	S	S
Coffee Maker	O	O	O	O	O	O	O	O	O
Cook Top - Recessed Cook Top c/w High Output Burner	S	S	S	S	S	S	S	S	S
New Countertop - Laminate w/ Solid Surface Edging, Stainless Steel Sink w/ Flush Sink Covers	S	S	S	S	S	S	S	S	S
Countertop - Solid Surface Counter in Galley and Booth Dinette or Freestanding Table (N/A on Wall Mount Table)	O	O	O	O	O	O	O	O	O
Flooring - Hardwood in Galley	S	S	S	S	S	S	S	S	S
Micro/Convection Oven - (OTR) c/w 110V Range Hood and Light	-	S	S	S	S	S	S	S	S
Microwave Oven	S	-	-	-	-	-	-	-	-
Oven - LP Gas	O	O	O	O	O	O	O	O	O
Range Hood - c/w Light	S	-	-	-	-	-	-	-	-
Refrigerator - Dometic® Two Door, Gas/Electric (10 cu. ft.)	O	O	O	O	O	O	O	O	O
Refrigerator - Dometic® Two Door, Gas/Electric (8 cu. ft.)	S	S	S	S	S	S	S	S	S
Refrigerator Inserts - Raised Sculptured Solid Oak Fridge Inserts	O	O	O	O	O	O	O	O	O
LAVATORY									
Door - Shower/Tub Door (F - Folding, S - Sliding, H - Hinged)	S	F	F	S	S	H	S	S	H
Fan - Power Vent in Bathroom	S	S	S	S	S	S	S	S	S
Fan - Upgrade To Thermostatically Controlled (Non Reversible) in Lavatory or Toilet Room	O	O	O	O	O	O	O	O	O
Flooring - Linoleum Flooring in Bathroom	S	S	S	S	S	S	S	S	S
Skylight - in Shower	S	S	S	S	S	S	S	S	S
Toilet - Foot Flush	S	S	S	S	S	S	S	S	S
ENTERTAINMENT									
CB Antenna - Includes Coax Lead under Dash	O	O	O	O	O	O	O	O	O
Master Control - Audio/Video Master Control Switch Box	S	S	S	S	S	S	S	S	S
Pre-wire - for AC or DC Bedroom TV	S	S	-	-	-	-	-	-	-
Pre-wire - Satellite Dish (with 12V Power and 110V)	O	O	O	O	O	O	O	O	O
Radio Monoplex System	S	S	S	S	S	S	S	S	S
Stereo - AM/FM Cassette in Dash Stereo w/ Separate 6 Disk CD Changer w/ Big Buttons - 80 Watt	O	O	O	O	O	O	O	O	O
New Stereo - AM/FM CD in Dash Stereo w/ Big Buttons - 80 Watt	S	S	S	S	S	S	S	S	S
New Stereo - AM/FM CD Stereo c/w 6 Stack in Dash CD Changer w/ Big Buttons - 80 Watt	O	O	O	O	O	O	O	O	O
Stereo - Exterior AM/FM - CD Stereo with Shielded Speakers	O	O	O	O	O	O	O	O	O
Telephone & Cable TV Hook-up - Exterior	S	S	S	S	S	S	S	S	S
TV - AC 20" Color Stereo c/w Remote in Bedroom	-	-	S	S	S	S	S	S	S
TV - AC 20" Color Stereo c/w Remote in Front Overhead Cabinet	S	S	S	S	S	S	S	S	S
TV - DC 13" Color c/w Remote in Oak Cabinet in Bedroom	O	O	-	-	-	-	-	-	-
TV Antenna - Roof Top Retractable Antenna c/w Booster	S	S	S	S	S	S	S	S	S
VCR - AC Video Cassette Recorder	O	O	O	O	O	O	O	O	O

A2901
A3202F
A3202FB
A3509FB
A3510GB
A3601FB
A3519FB
A3511GB
A3611FB

HEATING, VENTILATING AND AIR CONDITIONING

Air Conditioner - Dual Ducted (2) 13,500 BTU c/w EMS	-	O	O	O	O	O	O	O	O
Air Conditioner - Ducted Roof 13,500 BTU	S	S	S	S	S	S	S	S	S
Air Conditioner - Ducted Roof 15,000 BTU with Heat Strip w/ Protective Coil Screen	-	O	O	O	O	O	O	O	O
Fan - Thermostatically Controlled Fan in Living Area	O	O	O	O	O	O	O	O	O
Fan - Thermostatically Controlled in Bedroom	S	S	S	S	S	S	S	S	S
Furnace - 2 x 25,000 BTU Furnace c/w Electronic Ignition	-	S	S	S	S	S	S	S	S
Furnace - 35,000 BTU Furnace c/w Electronic Ignition	S	-	-	-	-	-	-	-	-
Heater - Rear Auxiliary Automotive with Electric Water Valve	S	S	S	S	S	S	S	S	S

ELECTRICAL

Alarm System c/w Motion Detector	O	O	O	O	O	O	O	O	O
Batteries - Dual RV 27 Deep Cycle Auxiliary (12V)	S	S	S	S	S	S	S	S	S
Bi-Directional Isolator Relay Delay (BIRD) Battery Charging	S	S	S	S	S	S	S	S	S
Converter - 120/12 Volt c/w Charger & Changeover Relay	S	S	S	S	S	S	S	S	S
Energy Management System (EMS)	-	O	O	O	O	O	O	O	O
Generator - 5.5 KW Onan Marquis Gold	O	O	O	O	O	O	O	O	O
Generator Ready Package	S	S	S	S	S	S	S	S	S
Panel - 30 Amp Electrical Service	S	S	S	S	S	S	S	S	S
Panel - 50 Amp Electrical Service with EMS	-	-	-	O	O	O	O	O	O
Pre-wire - Rear-view Camera (For Color Monitor)	S	S	S	S	S	S	S	S	S
Pre-wire - Solar Panel	O	O	O	O	O	O	O	O	O
Switch - Electronic Battery Disconnect (Coach Batteries)	S	S	S	S	S	S	S	S	S

PLUMBING AND LP SYSTEMS

Black Tank Flush System	S	S	S	S	S	S	S	S	S
Holding Tanks - Enclosed and Insulated, Dual Heated Waste Tanks	S	S	S	S	S	S	S	S	S
LP Tank - Easy Access Propane Tank	S	S	S	S	S	S	S	S	S
Panel - Systems Monitor	S	S	S	S	S	S	S	S	S
Roughed in Plumbing for Washer Dryer	-	-	-	S	-	S	-	-	S
Switch - 3 Way Water Pump Switch	S	S	S	S	S	S	S	S	S
Valve - Water Heater By-Pass	S	S	S	S	S	S	S	S	S
New Water Heater - Electronic Ignition LP Gas/Electric/Motoraid (Capacity in US Gallons)	6	6	6	10	10	10	10	10	10
Water Purifier - Faucet in Galley	O	O	O	O	O	O	O	O	O
Water Tank - Enclosed and Insulated, Dual Heated Fresh Water Tank	S	S	S	S	S	S	S	S	S
Water Tank Fill and Bleach Port	S	S	S	S	S	S	S	S	S
Winterization System c/w Antifreeze Pickup	S	S	S	S	S	S	S	S	S

SYSTEMS

Central Vacuum with Outlet in Baggage Compartment	O	O	O	O	O	O	O	O	O
New Rear-view Camera/Monitor - Color LCD Display Mounted in Dash	O	O	O	O	O	O	O	O	O
Washer/Dryer (vented)	-	-	-	O	-	O	O	-	O

Factory P.D.I.

Factory P.D.I.	O	O	O	O	O	O	O	O	O
----------------	---	---	---	---	---	---	---	---	---

Product improvement is a continuing process at Triple E Recreational Vehicles. Thus, we reserve the right to change specifications on any or all products without prior notice, errors and omissions excepted. Triple E Recreational Vehicles is under no obligation to undertake modification to units manufactured prior to changes on specifications.

SPECIFICATIONS



Exterior storage is lit plus easily accessible with gas-powered struts.



New for 2003 – a big button radio allows for quick visual adjustments.



Choose the optional "touch of a button" electric driver's sun visor.

GVWR

GROSS VEHICLE WEIGHT RATING means the maximum permissible weight of this motorhome. The GVWR is equal to or greater than the sum of the unloaded vehicle weight (UVW) plus the net carrying capacity (NCC).

UVW

UNLOADED VEHICLE WEIGHT means the weight of the motorhome as built at the factory with full fuel, engine oil, and coolants. The UVW does not include cargo, fresh water, LP gas, occupants, factory or dealer installed accessories.

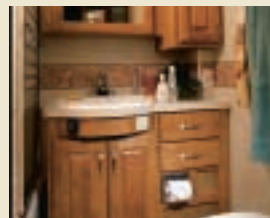
COMMANDER 2003	A2901	A3202F	A3202FB	A3509FB	A3510GB	A3601FB	A3519FB	A3511GB	A3611FB
	FORD CHASSIS					WORKHORSE CUSTOM CHASSIS			
GVWR - lbs (kg)	18000(8160)	20500(9295)	20500(9295)	22000(10000)	22000(10000)	22000(10000)	22000(10000)	22000(10000)	22000(10000)
UVW - lbs (kg)	14964(6665)	16770(7623)	17853(7925)	17853(8115)	17620(8009)	18096(8225)	TBA	TBA	TBA
NCC - lbs (kg)	3036(1380)	3730(1695)	3065(1393)	4147(1885)	4380(1991)	3904(1775)	TBA	TBA	TBA
Wheelbase - inches (mm)	190(4826)	208(5283)	208(5283)	228(5791)	228(5791)	228(5791)	228(5791)	228(5791)	228(5791)
Length - feet (mm)	29'10"(9098)	32'7"(9932)	32'7"(9932)	34'3"(10439)	34'3"(10439)	35'9"(10896)	34'3"(10439)	34'3"(10439)	35'9"(10896)
Width - feet (mm)	8'4"(2534)	8'4"(2534)	8'4"(2534)	8'4"(2534)	8'4"(2534)	8'4"(2534)	8'4"(2534)	8'4"(2534)	8'4"(2534)
Height Incl. A/C - feet (mm)	11'7"(3531)	11'7"(3531)	11'7"(3531)	11'7"(3531)	11'7"(3531)	11'7"(3531)	12'(3658)	12'(3658)	12'(3658)
** Water Tank Cap.- gal (l)	84(319)	84(319)	84(319)	88(333)	88(333)	88(333)	88(333)	88(333)	88(333)
Water heater	6(22.7)	6(22.7)	6(22.7)	10(37.8)	10(37.8)	10(37.8)	10(37.8)	10(37.8)	10(37.8)
Black Holding Tank Cap.- gal (l)	39(147.4)	39(147.4)	39(147.4)	39(147.4)	39(147.4)	42(158.8)	39(147.4)	39(147.4)	42(158.8)
Grey Holding Tank Cap.- gal (l)	39(147.4)	42(158.8)	42(158.8)	42(158.8)	42(158.8)	39(147.4)	42(158.8)	42(158.8)	39(147.4)
Fuel Cap.- gal (l)	75(284)	75(284)	75(284)	75(284)	75(284)	75(284)	75(284)	75(284)	75(284)
Propane Cap.- gal (l)	25.3(95.8)	24.2(91.5)	24.2(91.5)	29.2(110.4)	29.2(110.4)	29.2(110.4)	29.2(110.4)	29.2(110.4)	29.2(110.4)
** -Includes Water Heater	All Capacities in US gallons								



For added convenience, you'll appreciate the driver side entry/exit door.



Enhance your living area with the optional refreshment center.



The full-featured lavatory includes a solid oak vanity and skylight in the shower.

NCC

NET CARRYING CAPACITY means the maximum weight of all occupants, including the driver, personal belongings, food, fresh water, LP gas, tools, tongue weight of towed vehicle, factory and dealer installed accessories, etc., that can be carried by this motorhome. (NCC is equal to or less than GVWR minus UVW.)

NOTE: Please see your dealer for weights of factory installed options.



INTERIOR COMFORT AND EXTERIOR PROTECTION

Born of our northern heritage, Triple E's exclusive Climate Guard® system is quite simply the best interior comfort and exterior protection package available in the recreational vehicle industry today.

The Climate Guard® system has been developed with today's motorhome enthusiast in mind. It provides year round climate controlled comfort for passengers as well as built in protection for the motorhome itself, ensuring years of trouble free operation and enjoyment.

INTERIOR COMFORT

- Dometic® roof air conditioners, ducted front to rear, control the temperature throughout the coach.
- High output chassis air conditioner provides traveling comfort.
- Electronic ignition furnace designed to maintain requested interior temperatures through extreme exterior temperatures.
- High output chassis heater for quick windshield defrost.
- A rear auxiliary automotive heater - complete with electric valve - makes travel comfortable while heating the fresh water and holding tank compartments.
- Vacuum bonded, aluminium framed, insulated sidewall and roof construction provides high strength and maintained warmth throughout the coach.
- Coach windows are designed with a dual pane construction - impeding the transfer of cold to make the interior of the window warmer and less subject to condensation.
- Optional insulated vent covers provide superior insulation for the fantastic fans and roof vents.

EXTERIOR PROTECTION

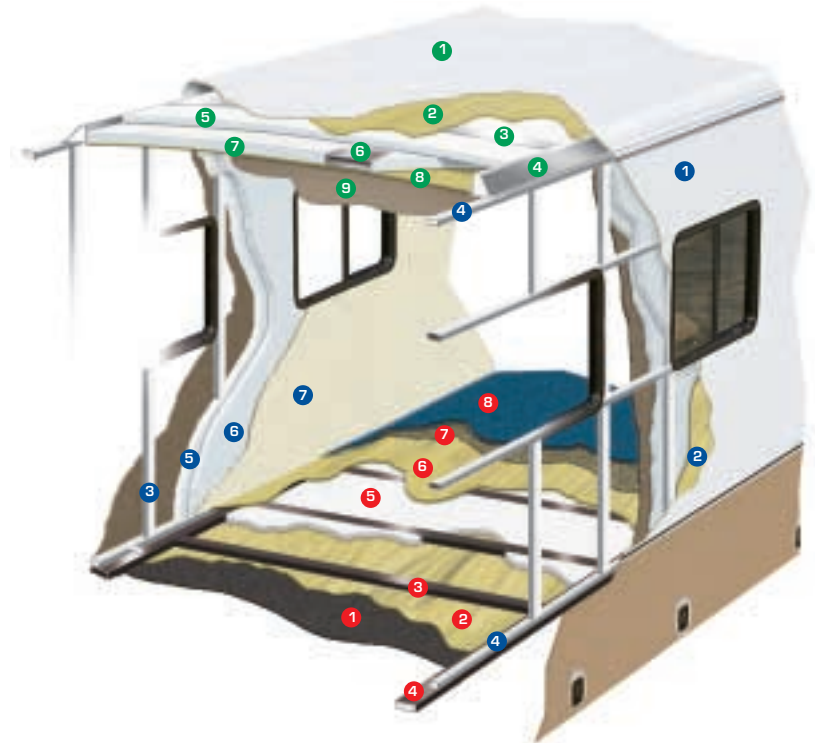
- Scratch and hail resistant gel coat fiberglass sidewalls with all weather exterior finish are easy to maintain and will not rust, pit, or fade.
- A domed, seamless, insulated, one piece EPDM rubber roof promotes quick water run off and reduces the noise of outside elements.
- Urethane undercoating protects against dust and moisture and reduces stone and road noise.
- Steel enclosed, fiberglass insulated and heated fresh water and holding tanks assure extreme cold climate performance for your plumbing system. Tanks are heated from two different sources: the motorhome's ducted furnace while parked and the rear auxiliary heater when traveling.
- Winterization system complete with potable antifreeze pickup kit allows you to easily drain tanks and fill water lines with potable antifreeze.
- Steel, insulated, and sealed firewall protects the driver and passengers from the outside elements.
- Additional 1/2" thermal break insulation beyond the standard 1" Styrofoam block insulation separates the climate controlled interior from the outside elements.



See for yourself how spacious the Commander is. Take a virtual tour at www.tripleev.com.

CONSTRUCTION

The major considerations in building a top quality motorhome are long lasting beauty coupled with the ability to stand up to any weather conditions. The coach is an aluminum and steel framed structure with vacuum bonded gel coat fiberglass sidewalls and a domed roof finished with a seamless EPDM membrane.



Floor (Exterior to Interior)

1. One Piece Woven Poly Propylene Underbelly
2. 3/8" Plywood
3. Tubular Steel Framing (Welded)
4. Styrofoam Filled Wall Support Plates
5. 1" Block Styrofoam Insulation
6. 1/2" Plywood
7. Carpet Underlay
8. Carpeting (Floor covering)

Sidewalls (Exterior to Interior)

1. Seamless Fiberglass Exterior
2. Luaun Structural Backer
3. Aluminium Framing (Welded) Roof Plate
4. Styrofoam Filled Floor and Roof Plate
5. 1" Block Styrofoam Insulation
6. 1/2" Styrofoam Thermal Break Insulation
7. Interior Decorative Luaun Wall Panels

Roof (Exterior to Interior)

1. One Piece EPDM Roofing
2. Luaun Backer
3. Aluminium Roof Truss
4. Styrofoam Filled Roof Truss Supports
5. 1 1/2" Block Styrofoam Insulation
6. Enclosed/Insulated Climate Control Ducting
7. 2" Block Styrofoam Thermal Break Insulation
8. 3/8" Plywood
9. One Piece Headliner

TRIPLE E QUALITY

A Triple E Commander Motorhome is a combination of first-class materials and quality controlled construction.

Built with a solid foundation, integrity is never compromised – inside and out.

Exteriors are virtually maintenance free and abrasion resistant. The domed roof allows for quick water run-off and an EPDM membrane both serves to protect against leaks and contributes to energy-efficiency.

Cabinetry is constructed with screws rather than staples to ensure structural integrity and durability. Both strong and moisture repellent, the solid oak doors are a front to ample storage space.

Designer interior decors are a mixture of style and functionality – with quality fabrics developed to handle years of wear while meeting or exceeding flame retardant standards.

All Triple E products are built to CSA (Canadian Standards Association) or RVIA (Recreational Vehicle Industry Association) Standards. Triple E was one of the first RV manufacturers to obtain the ISO 9002 certification – your assurance of the careful construction and high quality materials that are part and parcel of every Triple E Recreational Vehicle.



This combination of labels assures the purchaser that the manufacturer has met or surpassed CSA-CRVA-RVIA standards covering electrical services, gas services, plumbing services, and vehicular safety.

Commander motorhomes exceed 96 inches in width. In some states 96 inches is the maximum width of vehicles travelling some or all state roads. It is the responsibility of the owner to be familiar with the road usage laws of the states in which you travel.

COACH NET

Triple E is a proud partner of Coach Net, an extensive support program that provides complete and fully paid roadside assistance, emergency road service, and special warranty support benefits that follow you throughout Canada and the US. Service is free for the first year of ownership and is available at a nominal fee for subsequent years.

Coach Net's 24-hour Customer Care includes:

- Emergency roadside assistance including tow vehicle
- Toll free technician hotline for operation and service support
- Toll free nationwide service appointment assistance
- Free custom trip routing and color maps
- Warranty service at over 6,800 locations throughout North America
- Benefits such as free jump starts, tire changes, fuel delivery, and lock out service

Brochure pictures may be shown with optional equipment.



Discover for yourself how the little things can make a big difference. View the entire family of Triple E products at www.tripleerv.com.



P.O. Box 1230, Winkler, MB
Canada R6W 4C4
Tel: (204) 325-4361
Fax: (204) 325-5241
www.tripleerv.com

Experience the Difference