

EMBASSY 2003

Embassy



Life is good!



The little things make a big difference

NO DEADLINES, NO SCHEDULES,
NO RUSH, BECAUSE YOU'RE IN THE
DRIVER'S SEAT. SO INSIST ON STAYING
UNTIL YOU CATCH A TROPHY FISH,
GO OUT OF YOUR WAY TO FIND A
CHALLENGING GOLF COURSE, OR
FOLLOW SOME NEW FRIENDS ALONG
THEIR ROUTE. ANYTHING'S POSSIBLE
WHEN YOU HAVE THE DRIVE.



A34F shown with Blue Horizon Decor





Our well appointed galley makes meal prep a snap.



Storage space is found in the most convenient of places.



Consider the optional 13" bedroom television.

ALL UNDER ONE ROOF

If you've ever wondered what freedom feels like, it's time to get behind the wheel of the Embassy. Our 2003 model provides everything you desire to spend days, weeks, or months on the go - and in unparalleled style.

Every detail has been considered to ensure you feel right at home - from roof air conditioners right down to wall to wall carpeting. Choose from a host of available options such as:

- » TV, VCR, and stereos
- » rearview camera/monitor, or
- » painted skirts (as shown).

In addition to the basic Embassy, an optional XL package is available on all models to provide three-season comfort. Thermal pane windows, enclosed, insulated, and heated holding tanks, and a rear automotive auxiliary heater make the Embassy XL impervious to spring and fall chills.

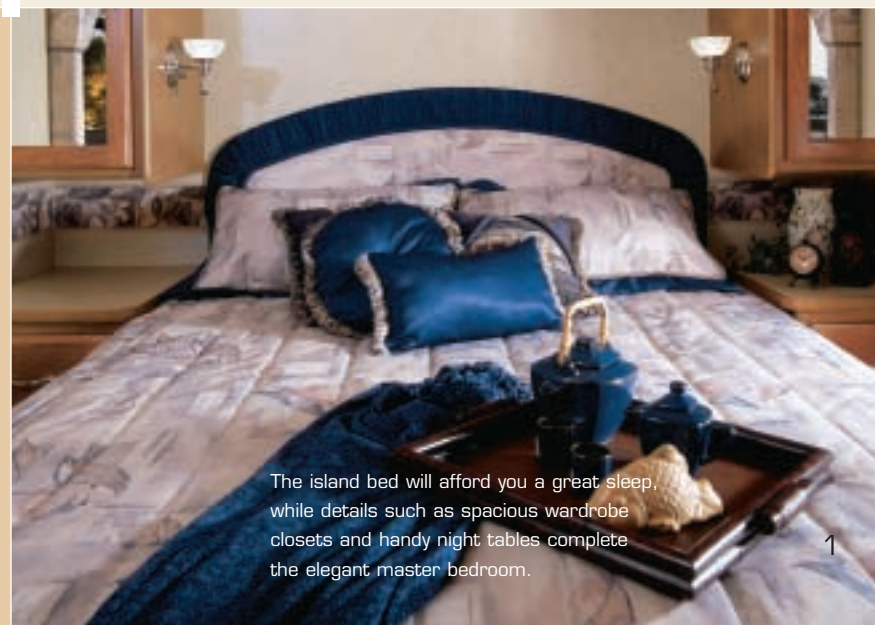
Inviting, climate controlled, and well planned, let the road take you where it will, as the Embassy is ready for anything.



For more information on the Embassy's features, visit our website at www.tripleerrv.com.



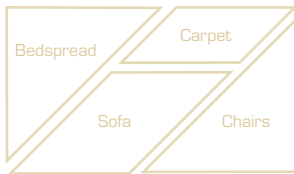
The Embassy is manufactured with Filon filoplated smooth exterior sidewalls. These panels are extremely dent and weather resistant and will keep your coach looking its best for years.



The island bed will afford you a great sleep, while details such as spacious wardrobe closets and handy night tables complete the elegant master bedroom.

The Look You Want

ALONG WITH YOUR CHOICE OF FOUR FLOORPLANS AND A HOST OF OPTIONS, FURTHER CUSTOMIZE YOUR COACH WITH ONE OF THREE DISTINCT INTERIOR DESIGN SCHEMES. SELECTED BY A GROUP OF PROFESSIONALS, THE COMBINATIONS SKILLFULLY COORDINATE UPHOLSTERY, CARPETING, AND WINDOW TREATMENTS.



Raised solid oak cabinet doors and drawer fronts are both beautiful and durable.



NUTMEG



FERN MEADOW



BLUE HORIZON

YOU'LL TRULY APPRECIATE THE CARE OUR ENGINEERS AND DESIGNERS HAVE TAKEN TO CREATE AN ENVIRONMENT THAT'S AS COMPLETE AS YOUR HOME YET LUXURIOUS ENOUGH TO REMIND YOU'RE ON VACATION. FLOORPLANS RANGE FROM 28 TO 34 FEET AND CAN SLEEP UP TO SIX ADULTS. YOU MAY JUST FIND THERE'S ALWAYS ROOM TO SPARE.



THE SPACE YOU NEED

THOUGHTFULLY DETAILED

Every aspect of the coach, inside and out, has been considered carefully. The living area boasts attractive and durable upholstery - as it may be your most high traffic area. You'll also find sturdy and easy to operate blinds to protect from the sun and for privacy. For your entertainment, a 20-inch TV is included as standard equipment - as is the CD in dash stereo. Consider the optional VCR if you are a movie fan.

The galley makes meal preparation easy by providing all of the ingredients for success. Range and cutting board sink covers allow extra counter space when required. Accented throughout with raised oak cabinetry, the galley

is well equipped with the following quality appliances:

- » a two-door fridge,
- » three burner stove,
- » oven, and
- » microwave.

The Embassy's plush master bedroom includes an inner spring mattress and wall-to-wall carpeting for extra comfort. Add the optional TV or a thermostatically controlled ceiling fan if desired.

Intelligent design such as the folding shower/tub door affords the best use of space possible. And that's the case in all areas of the Embassy, which is why storage seems more than ample - possibly even more than you need.



See for yourself how spacious the Embassy is.
Take a virtual tour at www.tripleerv.com.



Driver and passenger seats swivel for additional seating in the living area.



Our well appointed galley makes meal prep a snap.



Exterior storage is easily accessible and large enough for the supplies you need.



The sleek looking gel coat fiberglass front and rear mask complete the attractive exterior finish.

STANDARDS AND OPTIONS

S = Standard O = Option **New** New for 2003

A28
A29
A30G
A34F

A28
A29
A30G
A34F

VEHICULAR

Air Conditioner - Chassis	S	S	S	S
Airbag Assist Rear Suspension	O	O	O	O
Batteries - Auxiliary Coach Batteries (2 x 12V)	S	S	S	S
BIRD - Bi Directional Isolator Relay Delay Battery Charging	S	S	S	S
Block Heater	S	S	S	S
Bumper - Steel Reinforced Rear Bumper	S	S	S	S
Chassis - Ford V-10, 6.8L V10 Triton - 18,000 lb. GVW - 178" Wheelbase	S	-	-	-
Chassis - Ford V-10, 6.8L V10 Triton - 18,000 lb. GVW - 190" Wheelbase	-	S	S	-
Chassis - Ford V-10, 6.8L V10 Triton - 20,500 lb. GVW - 228" Wheelbase-	-	-	-	S
Cruise Control and Tilt Steering Wheel	S	S	S	S
New Fans - Chrome Cockpit Ventilating with Dash Switch	O	O	O	O
Hitch - Trailer Hitch Receiver w/ Wiring and Plug - Class III	S	S	S	S
Jacks - HWH Hydraulic Leveling Jacks with Joystick Control	O	O	S	S
Light - High Mounted Stoplight – LED Long Life	S	S	S	S
Rust Protection	O	O	O	O
Slide Out - HWH Hydraulic Slide Out System	-	-	S	S
Spare Tire and Wheel	S	S	S	S
Switch - Battery Boost Switch	S	S	S	S
Switch - Battery Disconnect Switch	S	S	S	S
Tires - Radial Ply	S	S	S	S
Transmission - Four Speed Automatic c/w Overdrive	S	S	S	S
Transmission Cooler	S	S	S	S
Undercoating - Automotive Type	S	S	S	S
Wheel Covers	S	S	S	S
Wheel Simulators	O	O	O	O
Wipers - Wet Arm Windshield Wipers c/w Intermittent	S	S	S	S

CONSTRUCTION

Floor - Vacuum Bonded Steel Framed Insulated Floor Construction	S	S	S	S
Galvanized Luggage Compartments c/w Carpet Base	S	S	S	S
Gel Coat Fiberglass Front & Rear Masks	S	S	S	S
Roof - Domed EPDM Roof c/w Rain Gutters and Down Spouts	S	S	S	S
Sidewalls - Vacuum Bonded FRP "Filon"	S	S	S	S
Steel Cab Floor, Firewall and Dash Structure	S	S	S	S
Vacuum Bonded Aluminium Framed Insulated Roof and Wall Constructions	S	S	S	S
Windows - Tinted Radius Corner	S	S	S	S

EXTERIOR

Door - Screened Entry Door c/w Deadbolt Lock	S	S	S	S
Exterior Assist Handle	S	S	S	S
Exterior Shower with Shut off Valves for Winterizing	O	O	O	O
Ladder - Roof Rack & Ladder	O	O	O	O
Light - Patio	S	S	S	S
Painted Skirts	O	O	O	O
Receptacle - Patio GFI Receptacle	S	S	S	S
Step - Electric Entry Step	S	S	S	S
Storage - Extra Large Exterior Storage w/ Locking Flush Baggage Doors	S	S	S	S

INTERIOR

Bedspread - Decorative Bedspread and Throw Pillows	S	S	S	S
Blind - Venetian Blind in Galley	S	S	S	S
Borders - Wall Borders in Galley and Bedroom Areas	S	S	S	S
Ceiling - Automotive "Soft Touch" Headliner	S	S	S	S
Detectors - Electronic Smoke, LP and CO Detectors	S	S	S	S
Doors - Raised Solid Oak Cabinet Doors	S	S	S	S
Drawers - Dual Roller Glide Drawers c/w Travel Lock	S	S	S	S
Fan - Thermostatically Controlled Ceiling Fan (Bedroom)	O	O	O	O
Fire Extinguisher - Dry Chemical	S	S	S	S
Flooring - Delete Living Area Carpet Rearward of Drivers Seats	O	O	O	O
Flooring - Wall to Wall Carpeting in Living and Bedroom Areas	S	S	S	S
Headboard - Fabric Wrapped Deluxe Headboard	S	S	S	S
Shades - Pleated	S	S	S	S

FURNITURE

Bed - Twin Beds	O	O	O	O
Booth Dinette - Steel Framing for Seat Belts	S	S	S	-
Booth Dinette - w/ Under Seat Storage	-	-	-	S
Chair - Cloth Cocktail Chair (2 in A29, 1 in A34F and A28)	S	S	-	S
Flip Table - Oak	-	S	-	S
Hide-A-Bed - in Lieu of Jackknife Sofa	-	-	-	O
New Mattress - Air Coil Mattress Upgrade on Hide-A-Bed (c/w 110V Air Pump)	-	-	-	O
Mattress - Innerspring 60" X 74"	S	S	S	S
Seats - Reclining Driver's and Passenger's Swivel Bucket Seats	S	S	S	S
Sofa - Jackknife Sofa	-	-	S	S
Sofa - Jackknife Sofa in Lieu of Cocktail Chairs	-	O	-	-
Table - Solid Oak Free Standing Table & Slat Back Chairs	-	-	-	O

GALLEY

Bi-fold Range Cover	S	S	S	S
Coffee Maker	O	O	O	O
New Convection Microwave - OTR c/w Light and 110V Vent Fan w/ Cook Top and Drawers	-	-	O	-
Cook Top - Three Burner Stove Top w/ High Output Burner c/w Oven	S	S	S	S
Countertop - Laminate Counter w/ Acrylic Sink w/ Cutting Board Sink Cover	S	S	S	S
New Flooring - Vinyl Floor Covering in Galley and Entrance Area	S	S	S	S
Microwave - Over the Range c/w Light and Vent Fan	-	-	S	-
Microwave Oven	S	S	-	S
Range Hood - c/w Light	S	S	-	S
Refrigerator - Dometic® – Gas/Electric (8 cu. ft.)	O	O	O	O
Refrigerator - Dometic® Two Door Fridge – Gas/Electric (6 cu. ft.)	S	S	S	S
Refrigerator Inserts - Oak Finished Raised Fridge Inserts	O	O	O	O

LAVATORY

Door - Folding Shower/Tub Door	S	S	-	S
Fan - Power Bath Vent	S	S	S	S
Flooring - Vinyl Floor Covering in Bathroom	S	S	S	S
Shower - Neo-Angle Shower with Glass Doors	-	-	S	-
Skylight in Shower	O	O	O	O
Toilet - Foot Flush	S	S	S	S

SPECIFICATIONS

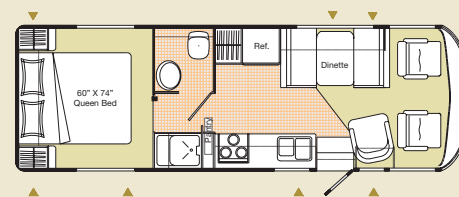
	A28	A29	A30G	A34F
ENTERTAINMENT				
CB Antenna - Includes Coax Lead Under Dash	O	O	O	O
New AM/FM Cassette in Dash Stereo w/ 6 Disk CD Changer w/ Big Buttons - 80 Watt	O	O	O	O
New AM/FM CD in Dash Stereo w/ Big Buttons - 80 Watt	S	S	S	S
New AM/FM CD Stereo w/ 6 Stack in Dash CD Changer w/ Big Buttons - 80 Watt	O	O	O	O
Telephone and Cable TV Hook Up - Exterior	S	S	S	S
TV - AC 20" Color Stereo c/w Remote in Dash	S	S	S	S
TV - DC 13" Color c/w Remote in Oak Cabinet in Bedroom	O	O	O	O
TV Antenna - Roof Top Retractable c/w Booster	S	S	S	S
VCR - A/C Video Cassette Recorder	O	O	O	O
HEATING, VENTILATION AND AIR CONDITIONING				
Air Conditioner - 13,500 BTU with Heat Strip	O	O	O	O
Air Conditioner - 15,000 BTU with Heat Strip w/ Protective Coil Screen	O	O	O	O
Air Conditioning - Dual Ducted 2 x 13,500 BTU Roof Air w/ Selector Switch	-	-	-	O
Ducting - Ducted for Roof Air Conditioner	S	S	S	S
Furnace - Forced Air Furnace - 35,000 BTU	S	S	S	S
ELECTRICAL				
Converter - 120 Volt/12 Volt/55 Amp c/w Charger	S	S	S	S
Cord - Power Cord 30 Amp.	S	S	S	S
Generator - 4.0 KW Onan MicroQuiet	O	O	O	O
New Generator Ready Package	S	S	S	S
Pre-Wire - for Rearview Camera/Monitor	S	S	S	S
PLUMBING AND LP SYSTEMS				
LP Tank - Under Floor Mounted	S	S	S	S
Valve - Water Heater By-Pass Valve	S	S	S	S
New Water Heater - Electronic Ignition LP/Electric	S	S	S	S
SYSTEMS				
Rearview Camera/Monitor - B&W	O	O	O	O
Factory PDI	O	O	O	O
SPECIAL OPTION PACKAGE(S)				
XL PACKAGE INCLUDES:	O	O	O	O
Holding Tanks Enclosed, Insulated and Heated				
Light Package in Baggage Compartment				
Rear Auxiliary Heater				
Thermal Pane Windows				

EMBASSY 2003	A28	A29	A30G	A34F
GVWR-LBS(KG)	18000(8164)	18000(8164)	18000(8164)	20500(9298)
UVW-LBS(KG)	12643(5735)	12838(5823)	13889(6300)	15166(6879)
NCC-LBS(KG)	5357(2429)	5162(2341)	4111(1864)	5334(2419)
WHEELBASE-IN(mm)	178(4521)	190(4826)	190(4826)	228(5791)
LENGTH not incl.spare-FT(mm)	28'3"(8611)	29'3"(8915)	30'8"(9345)	34'2"(10425)
WIDTH-FT(mm)	8'4"(2534)	8'4"(2534)	8'4"(2534)	8'4"(2534)
HEIGHT Incl.A/C-FT(mm)	11'3"(3428)	11'3"(3428)	11'3"(3428)	11'3"(3428)
*WATER TANK CAP. GAL(L)	76(285)	76(285)	76(285)	76(285)
HOLDING TANK CAP.-GAL(L)	78(295)	78(295)	78(295)	78(295)
FUEL CAP.-GAL(L)	75(284)	75(284)	75(284)	75(284)
PROPANE CAP.-GAL(L)	25.3(95.8)	25.3(95.8)	25.3(95.8)	25.3(95.8)

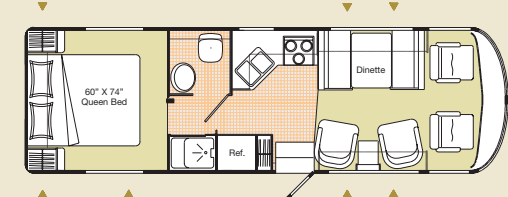
* - Includes 6 gallon Water Heater

All Capacities in U.S. Gallons

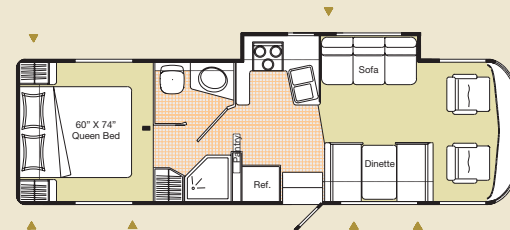
FLOORPLANS



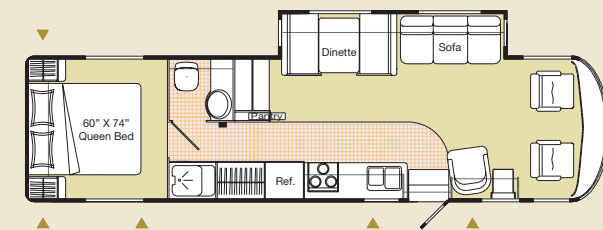
A28



A29



A30G



A34F

Product improvement is a continuing process at Triple E Recreational Vehicles. Thus we reserve the right to change specifications on any or all products without prior notice; errors and omissions excepted. Triple E Recreational Vehicles is under no obligation to undertake modification to units manufactured prior to changes on specifications.

NOTE: Please see your dealer for weights of factory installed options.

GVWR

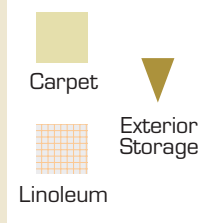
GROSS VEHICLE WEIGHT RATING means the maximum permissible weight of this motorhome. The GVWR is equal to or greater than the sum of the unloaded vehicle weight (UVW) plus the net carrying capacity (NCC).

UVW

UNLOADED VEHICLE WEIGHT means the weight of the motorhome as built at the factory with full fuel, engine oil, and coolants. The UVW does not include cargo, fresh water, LP gas, occupants, factory or dealer installed accessories.

NCC

NET CARRYING CAPACITY means the maximum weight of all occupants, including the driver, personal belongings, food, fresh water, LP gas, tools, tongue weight of towed vehicle, factory and dealer installed accessories, etc., that can be carried by this motorhome. (NCC is equal to or less than GVWR minus UVW.)



TRIPLE E QUALITY

A Triple E Embassy Motorhome is a combination of first-class materials and quality controlled construction.

Built with a solid foundation, integrity is never compromised - inside or out.

Exteriors are virtually maintenance free and abrasion resistant. The domed roof allows for quick water run-off and an EPDM membrane serves both to protect against leaks and contribute to energy-efficiency.

Cabinetry is constructed with screws rather than staples to ensure structural integrity and durability. Both strong and moisture repellent, the solid oak doors are a front to ample storage space.

Designer interior doors are a mixture of style and functionality - with quality fabrics developed to handle years of wear while meeting or exceeding flame retardant standards.

All Triple E products are built to CSA (Canadian Standards Association) or RVIA (Recreational Vehicle Industry Association) standards. Triple E was one of the first RV manufacturers to obtain the ISO 9002 certification - your assurance of the careful construction and high quality materials that are part and parcel of every Triple E Recreational Vehicle.



Triple E is proud to offer a
2 YEAR LIMITED WARRANTY

on structure as well as most major components.
Please see your dealer for further details.



This combination of labels assures the purchaser that the manufacturer has met or surpassed CSA-CRVA-RVIA standards covering electrical services, plumbing services, and vehicular safety.

Embassy Motorhomes exceed 96 inches in width. In some states, 96 inches is the maximum width of vehicles traveling some or all state roads. It is the responsibility of the owner to be familiar with the road usage laws of the states in which you travel.

COACH NET

Triple E is a proud partner of Coach Net, an extensive support program that provides complete and fully paid roadside assistance, emergency road service, and special warranty support benefits that follow you throughout Canada and the US. Service is free for the first year of ownership and is available at a nominal fee for subsequent years.

Coach Net's 24-hour Customer Care includes:

- Emergency roadside assistance including tow vehicle
- Toll free technician hotline for operation and service support
- Toll free nationwide service appointment assistance
- Free custom trip routing and color maps
- Warranty service at over 6,800 locations throughout North America
- Benefits such as free jump starts, tire changes, fuel delivery, and lock out service

Brochure pictures may be shown with optional equipment.



Discover for yourself how the little things can make a big difference. View the entire family of Triple E products at www.tripleerv.com.



P.O. Box 1230, Winkler, MB
Canada R6W 4C4
Tel: (204) 325-4361
Fax: (204) 325-5241
www.tripleerv.com

Experience the Difference