

2004 EDITION

# EMPERESS

EMPERESS 2004



TAKE FREEDOM *Further*

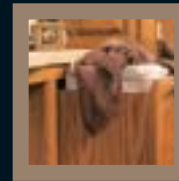




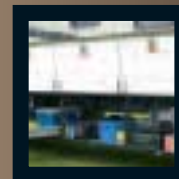
Tuscan Spice décor



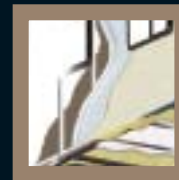
New Décor Choices  
*Page 3*



Important Details  
*Page 4*



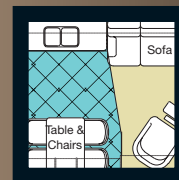
Ample Storage  
*Page 5*



Construction  
*Page 6*

# Come Home to Freedom

Imagine your lifestyle – to go. Embrace the endless possibilities, opportunities, and adventures that await. Get away from it all – and take it all with you.



New Floor Plans  
*Page 7*

# A Home for All Seasons

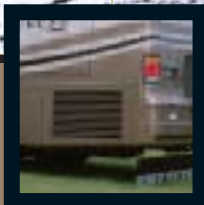
The 2004 Empress is engineered to ensure absolute climate control – no matter the weather.

## GUARDING AGAINST THE COLD

Boasting the best insulation values in its class, the Empress is completely impervious to chills. Just adjust the thermostat to your preference.

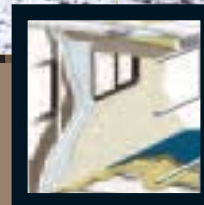
## BEATING THE HEAT

Superior construction and design – combined with an extensive air conditioning system, will keep your coach cool and comfortable when you've had your fill of the sun.



### Side Radiator

The Freightliner side radiator not only improves cooling capacity, but allows for more horsepower to the wheels.



### Wall/Roof/Floor

Excellent insulation properties and quality construction maximize climate control for four-season comfort.

*See more on Page 6*





### Baggage Compartment

The carpeted baggage area is sealed by gas strut supported, insulated aluminium doors.



### Low E Glass

Energy-effective windows reflect heat in summer while allowing long-wave heat energy into the coach in winter.

*See Climate Guard on Page 6*



### Sunguard® Flexroof

The Empress features an exceptionally durable Filon embossed seamless Sunguard® flexroof.

2004 EDITION  
E M P R E S S

**TODAY'S MOST IMPRESSIVE MOTORHOME**

Over 38 feet of well-appointed living space.  
Full 60" x 80" residential quality queen bed.  
First class Flexsteel furniture.

**UNPARALLELED CONSTRUCTION**

Built on a solid Freightliner foundation.  
Manufactured with only top grade materials.  
Well-insulated for seasonal comfort.

**INCORPORATING YOUR STYLE**

Your choice of 5 stunning décor combinations.  
Your choice of 4 distinctive exterior treatments.  
Your choice of 5 varied floor plans to suit your needs.



900 950 1100 1200 1300 1400 1500

# The Coach with the Most

Year after year, the Empress has held the position as Triple E's most luxurious motorhome on the market, and 2004 is no exception.

Turning heads on and off the road, the Empress is as complete as it is beautiful. Stretching over 38 feet and equipped with slide-outs, the amount of living space is almost overwhelming. Enhanced in every possible way for elegance and comfort - from the ceramic tile floor right up to the brilliant skylight, inside you'll find a host of appliances, amenities, and splendidly thoughtful touches that help make every day perfect.



Hillside Heather décor

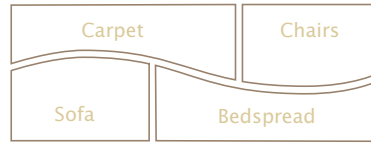
↑ *The full featured galley with exquisite oak cabinetry was designed to ensure you never lose your inspiration to create mouthwatering meals. A 32" TV is available with a handsome entertainment cabinet in some models.*



For more information on the Empress's features, visit our website at [www.tripleev.com](http://www.tripleev.com)

# Good Looks

You are able to customize your motorhome with one of five distinct interior design schemes. Developed by a group of professionals, our combinations skillfully coordinate upholstery, carpeting, window treatments, and exterior graphics in a manner that is both especially pleasing to the eye and of uncompromising quality.



OAK COLOUR: CHERRY NUTMEG

MAPLE COLOUR: GOLDEN MAPLE



CHAMPAGNE – STANDARD PAINT



HILLSIDE HEATHER – STANDARD PAINT



CHAMPAGNE – FULL BODY PAINT OPTION



HILLSIDE HEATHER – FULL BODY PAINT OPTION



OCEAN MIST – STANDARD PAINT



BAMBOO – STANDARD PAINT



OCEAN MIST – FULL BODY PAINT OPTION



BAMBOO – FULL BODY PAINT OPTION



Optional Tuscan Spice



Bamboo



Champagne



Ocean Mist



Hillside Heather



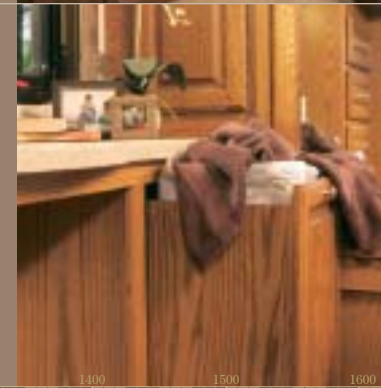
*The bedroom is equipped with a lovely built in vanity table and 20" TV with remote (shown with dinette chair).*



*An optional compact washer/dryer will save you visits to the laundromat on long trips.*



*No more wondering where to store laundry. The Empress includes a convenient hamper so you can tuck away your wash.*



## Attention to Detail

Every aspect of the Empress incorporates the caliber of lifestyle you have become accustomed to. Below is just a sample of some of the highlights and special details:

- The extensive galley area features top quality appliances which include thoughtful extras like an ice maker and solid surface counter tops.
- Outfitted with stylish fixtures and a garden bathtub or optional neo-angle shower, the lavatory is more spacious than any other motorhome.
- For supreme relaxation – just enter the master bedroom. Ornate fabrics and a CD stereo are just a few of the features designed to make the room feel like a retreat.



*Domed ceiling features soft touch, easily maintained vinyl headliner and modern lighting solutions.*



*The familiar automotive-style dashboard makes driving easy and comfortable.*



*A hi-fi VCR is standard equipment while a DVD player is available as an option.*



↑ *Well-planned and designed with more than ample storage, there are no limits to what can be accomplished in the galley. (Maple cabinetry shown)*



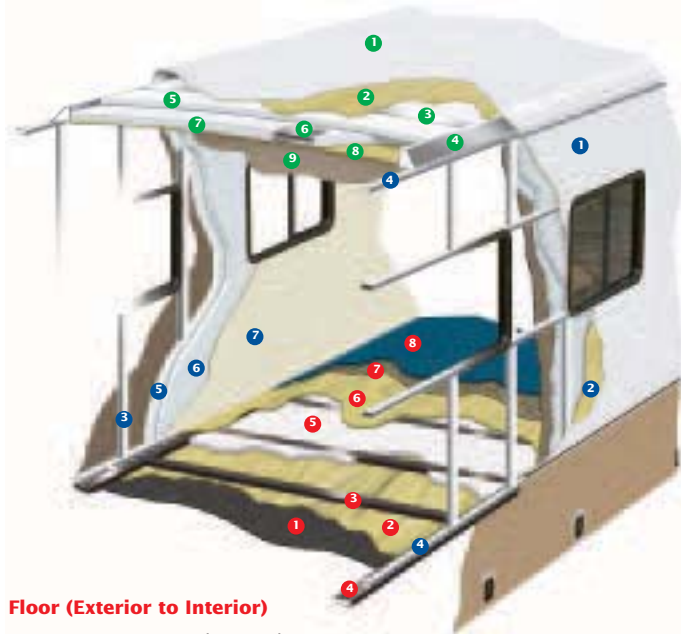
Learn more about the Empress at [www.tripleerv.com](http://www.tripleerv.com).

← *With plenty of easily accessible exterior storage, there's room for larger items like barbeques and golf clubs.*

# Quality Construction

We take pride in ensuring the foundation of the Empress is as sound as the interior is elegant.

The major considerations in building a top quality motorhome are long lasting beauty coupled with the ability to stand up to any weather conditions. The coach is basically an aluminium and steel framed structure with vacuum bonded gelcoat fibreglass side walls and a domed Sunguard® FRP Flexroof.



## Floor (Exterior to Interior)

1. One Piece Woven Poly-Propylene Underbelly
2. 3/8" Plywood
3. Tubular Steel Framing (Welded)
4. Styrofoam Filled Wall Support Plates
5. 1" Block Styrofoam Insulation
6. 1/2" Plywood
7. Carpet Underlay
8. Carpeting (Floor covering)

## Sidewalls (Exterior to Interior)

1. Seamless Fibreglass Exterior
2. Luaun Structural Backer
3. Aluminium Framing (Welded)
4. Styrofoam Filled Floor and Roof Plate
5. 1" Block Styrofoam Insulation

6. 1/2" Styrofoam Thermal Break Insulation
7. Interior Decorative Luaun Wall Panels

## Roof (Exterior to Interior)

1. Domed Sunguard FRP Flexroof
2. Luaun Backer
3. Aluminium Roof Truss
4. Styrofoam Filled Roof Truss Supports
5. 1 1/2" Block Styrofoam Insulation
6. Enclosed/Insulated Climate Control Ducting
7. 2" Block Styrofoam Thermal Break Insulation
8. 3/8" Plywood
9. One Piece Headliner



Born of our northern heritage, Triple E's exclusive Climate Guard® system is quite simply the best interior comfort and exterior protection package available in the recreational vehicle industry today. The Climate Guard® system has been developed with today's motorhome enthusiast in mind. It provides year round climate controlled comfort for passengers as well as built in protection for the motorhome itself, ensuring years of trouble free operation and enjoyment.

## INTERIOR COMFORT

- Two domestic® roof air conditioners, ducted front to rear, control the temperature throughout the coach.
- High output chassis air conditioner provides travelling comfort.
- Electronic ignition furnace designed to maintain requested interior temperatures through extreme exterior temperatures.
- High output chassis heater for quick windshield defrost.
- Two rear auxiliary automotive heaters - complete with electric valves – make travel comfortable while heating the fresh water and holding tank compartments.
- Vacuum bonded, aluminium-framed, and insulated sidewall and roof construction provides high strength and maintains warmth throughout the coach.
- Thermal barrier window system combats condensation in the coach by providing a thermal break in the aluminium main frame. This feature in the dual pane window impedes the transfer of cold through the frame by using an insulating material thereby making the interior of the window warmer and less subject to condensation.
- All windows are coated "Low E" glass which in summer prevents outdoor long-wave heat energy from entering the coach by reflecting it back outside. In winter, indoor long-wave heat energy is reflected back into the coach, keeping it warm.
- Insulated vent covers provide superior insulation for the fantastic fans and roof vents.

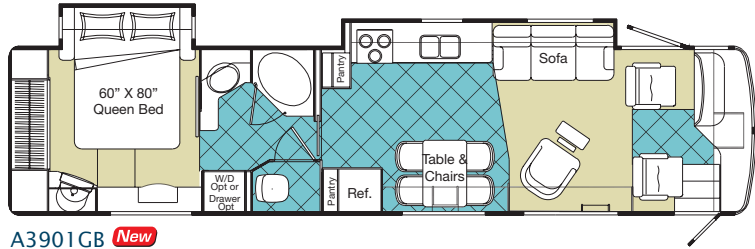
## EXTERIOR PROTECTION

- Scratch and hail resistant gelcoat fibreglass sidewalls with all weather exterior finish are easy to maintain and will not rust or pit.
- A domed, seamless, insulated, Filon® embossed Sunguard® flexroof promotes quick water run off and reduces the noise of outside elements.
- Urethane undercoating protects against dust and moisture and reduces stone and road noise.
- Steel enclosed, fibreglass insulated and heated fresh water and holding tanks assure extreme cold climate performance for your plumbing system. Tanks are heated from two different sources: the motorhome's ducted furnace while parked and the rear auxiliary heater when travelling.
- Winterization system complete with potable antifreeze pickup kit allows you to easily drain tanks and fill water lines with potable antifreeze.
- Steel, insulated, and sealed firewall protects the driver and passengers from the outside elements.
- Additional 1/2" thermal break insulation beyond the standard 1" styrofoam block insulation separates the climate controlled interior from the outside elements.

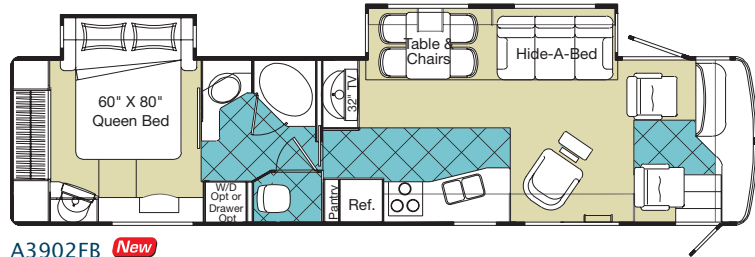


For more information on the Empress's special qualities, visit [www.tripleerv.com](http://www.tripleerv.com).

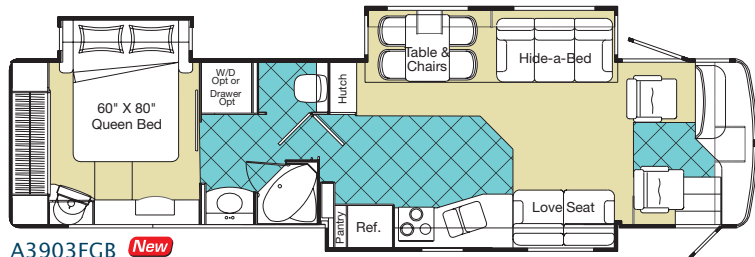
# Floor Plans



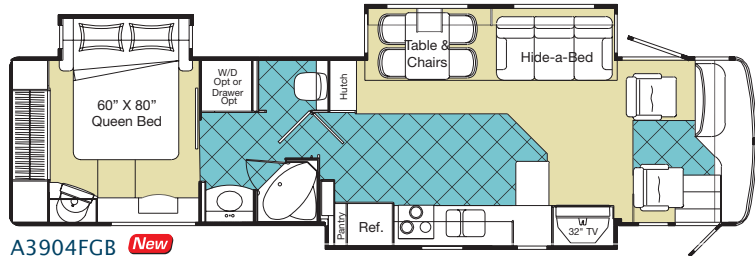
A3901GB **New**



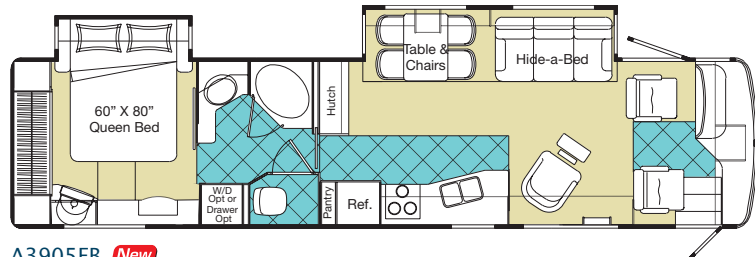
A3902FB **New**



A3903FGB **New**






A3904FGB **New**



A3905FB **New**

# Specifications

	A3901GB	A3902FB	A3903FGB	A3904FGB	A3905FB
GVWR - lbs (kg)	32,000 (14,545)	32,000 (14,545)	32,000 (14,545)	32,000 (14,545)	32,000 (14,545)
UVW - lbs (kg)	23,653 (10,751)	25,783 (11,719)	26,935 (12,217)	TBD	24,764 (11,256)
NCC - lbs (kg)	7,347 (3,340)	6,217 (2,826)	5,065 (2,297)	TBD	6,236 (2,834)
Wheelbase - in (mm)	252" (6,401)	252" (6,401)	252" (6,401)	252" (6,401)	252" (6,401)
Length - ft (mm)	38'10" (11,836)	38'10" (11,836)	38'10" (11,836)	38'10" (11,836)	38'10" (11,836)
Width - ft (mm)	8'4" (2,534)	8'4" (2,534)	8'4" (2,534)	8'4" (2,534)	8'4" (2,534)
Height (incl. A/C) - ft (mm)	12'3" (3,734)	12'3" (3,734)	12'3" (3,734)	12'3" (3,734)	12'3" (3,734)
*Water Tank Cap. - gal (l)	102 (386)	102 (386)	102 (386)	102 (386)	102 (386)
Holding Tank Cap. Grey - gal (l)	57 (216)	57 (216)	57 (216)	57 (216)	57 (216)
Holding Tank Cap. Black - gal (l)	57 (216)	57 (216)	57 (216)	57 (216)	57 (216)
Fuel Cap. - gal (l)	100 (379)	100 (379)	100 (379)	100 (379)	100 (379)
Propane Cap. - gal (l)	32 (121)	32 (121)	32 (121)	32 (121)	32 (121)
*Includes 10 gal water heater					

-  Carpet
-  Ceramic Tile
-  **New** New for 2004

Product improvement is a continuing process at Triple E Recreational Vehicles. Thus we reserve the right to change specifications on any or all products without prior notice; errors and omissions excepted. Triple E Recreational Vehicles is under no obligation to undertake modification to units manufactured prior to changes on specifications.



Cummins ISL 400 HP Diesel



Caterpillar 350 HP Diesel

## GVWR

GROSS VEHICLE WEIGHT RATING means the maximum permissible weight of this motorhome. The GVWR is equal to or greater than the sum of the unloaded vehicle weight (UVW) plus the net carrying capacity (NCC).

## UVW

UNLOADED VEHICLE WEIGHT means the weight of the motorhome as built at the factory with full fuel, engine oil, and coolants. The UVW does not include cargo, fresh water, LP gas, occupants, factory or dealer installed accessories.

## NCC

NET CARRYING CAPACITY means the maximum weight of all occupants, including the driver, personal belongings, food, fresh water, LP gas, tools, tongue weight of towed vehicle, factory and dealer installed accessories, etc., that can be carried by this motorhome. (NCC is equal to or less than GVWR minus UVW.)

*NOTE: Please see your dealer for weights of factory installed options.*

# Standards and Options

A3901GB  
A3902FB  
A3903FGB  
A3904FGB  
A3905FB

A3901GB  
A3902FB  
A3903FGB  
A3904FGB  
A3905FB

VEHICULAR					
Air Brakes - with Slack Adjusters	S	S	S	S	S
Air Conditioner - Chassis	S	S	S	S	S
Air Horns	S	S	S	S	S
Air Suspension - with Bistein Shock Absorbers	S	S	S	S	S
Alternator - 160 Amp	S	S	S	S	S
Block Heater (1000 W) with Switch in Bedroom	S	S	S	S	S
Bumpers - Integrated Fibreglass - Steel Reinforced	S	S	S	S	S
Chassis - Freightliner c/w Caterpillar 350 HP Turbo Diesel (XC Series) Raised Rail Side Radiator	S	S	S	S	S
Chassis - Freightliner c/w Cummins 400 HP Turbo Diesel (XC Series) Raised Rail Side Radiator	O	O	O	O	O
Compass/Thermometer - Dash Mounted Directional Compass with Exterior Temperature	S	S	S	S	S
Cruise Control	S	S	S	S	S
Door - Driver Door with Power Window	S	S	S	S	S
Exhaust Brake	S	S	S	S	S
Fans - Chrome Cockpit Ventilating with Dash Switch	S	S	S	S	S
Fuel Fill - Concealed Locking Fuel Fill Access on both Sides	S	S	S	S	S
Headlights - Styled with Halogen Bulbs	S	S	S	S	S
<b>New</b> Hitch - Trailer Hitch Receiver with Wiring & Plug - 10,000 lb	S	S	S	S	S
<b>New</b> IFS - ZF Independent Front Suspension	O	O	O	O	O
Jacks - Automatic HWH Levelling System with Auto Air Dump	S	S	S	S	S
Light - High Mount Stoplight - LED Long Life	S	S	S	S	S
Lights - Halogen Automotive Driving Lights	S	S	S	S	S
Mats - Driver/Passenger Floor Mats	S	S	S	S	S
Mirrors - Heated Remote Chrome Power Mirrors	S	S	S	S	S
Mud Guard - Monogrammed Triple E Rear Mudguard (Stainless Steel on Rubber)	O	O	O	O	O
Rust Protection	O	O	O	O	O
Steering Wheel - with Leather Cover and VIP Controls (includes Wiper and Washer Tilt/telescopic)	S	S	S	S	S
Switch - Battery Selector for Radio	S	S	S	S	S
Switch - Battery Boost (Coach to Chassis Batteries)	S	S	S	S	S
Tires - Michelin Radial 275/80R22.5XZE	S	S	S	S	S
Transmission - Allison 3000 MH 6-Speed Automatic with Lock Up	S	S	S	S	S
Transmission Cooler	S	S	S	S	S
Transmission Temperature Gauge	S	S	S	S	S
Undercoating - Automotive Type	S	S	S	S	S
Wheels - Alcoa Aluminium	S	S	S	S	S
Wipers - Wet Arm Windshield Wipers with Intermittent Function	S	S	S	S	S
CONSTRUCTION					
Baggage Doors - Aluminium Baggage Doors with Gas Struts and Slam Latches	S	S	S	S	S
Fibreglass Molded Front & Rear Mask	S	S	S	S	S
Lined and Lit Baggage Compartments	S	S	S	S	S
Roof - Domed Kemlite FRP Flexroof	S	S	S	S	S
Steel Cab Floor, Firewall & Dash Structure	S	S	S	S	S
Vacuum Bonded Aluminium-Framed Insulated Sidewall & Roof Construction with Thermal Break	S	S	S	S	S
Vacuum Bonded Gelcoat Fibreglass Sidewalls	S	S	S	S	S
Vacuum Bonded Steel-Framed Insulated Floor Construction	S	S	S	S	S
Windows - Thermal Barrier Window System with Low E Coating	S	S	S	S	S
COACH EXTERIOR					
<b>New</b> Cargo Slide - Mounted in Forward Baggage Bay (N/A with Freezer and Exterior TV)	O	O	O	O	O
<b>New</b> Cargo Slide - Mounted in Rear Baggage Bay	O	O	O	O	O
Door - Screened Entry Door with Deadbolt Lock	S	S	S	S	S

Exterior Shower	S	S	S	S	S
Graphics - Painted Exterior Graphics	S	S	S	S	S
Handle - Entry & Driver Door Assist Handles (Interior Mounted)	S	S	S	S	S
<b>New</b> Ladder - Exterior Ladder with Detachable Lower Section	S	S	S	S	S
Lights - Deluxe Patio Lights (2)	S	S	S	S	S
Lights - Docking Lamps (2 side, 2 rear)	S	S	S	S	S
Paint - Full Body Exterior Paint with Clear Coat	O	O	O	O	O
Step - Electric Retractable Entry Step	S	S	S	S	S
COACH INTERIOR					
Bedspread - Decorative Bedspread with Throw Pillows	S	S	S	S	S
Blinds - Side Driver & Passenger Roller Blinds	S	S	S	S	S
Cabinetry - "Golden Maple" Cabinetry	O	O	O	O	O
Cabinetry - Solid Oak Cabinet Face Frames and Paneling	S	S	S	S	S
<b>New</b> Ceiling - Domed with Vinyl Padded Headliner	S	S	S	S	S
Cover - Pneumatic Powered Front Step Cover	S	S	S	S	S
Covers - Insulated Vent Covers	O	O	O	O	O
Detectors - Electronic Smoke, LP & CO Detectors	S	S	S	S	S
Doors - Sculptured Oak Panel Cabinet Doors	S	S	S	S	S
Drawers - Dual Roller Glide Drawers with Travel Lock	S	S	S	S	S
Drawers - Slide-out Drawer Option in Washer/Dryer Cabinet (N/A with Washer/Dryer Option)	O	O	O	O	O
Fire Extinguisher - Dry Chemical	S	S	S	S	S
Flooring - Ceramic Tile in Entrance Area	S	S	S	S	S
Headboard - Fabric Wrapped	S	S	S	S	S
Latches - Snap Latches on all Cabinet Doors	S	S	S	S	S
Lighting - Courtesy Floor Lamps	S	S	S	S	S
Safe - Keylock Safebox	S	S	S	S	S
Shades - Day/Night Pleated with Bedroom Blackout	S	S	S	S	S
Skylight - in Living Area	O	O	O	O	O
Slide-out - Bed Slide-out with Rear Wardrobe and Make-up Table	S	S	S	S	S
Slide-out - Flush Floor HWH Hydraulic Slide-out System in Living Area with Electric Travel Locks	-	S	S	S	S
Storage - Easy under Bed Storage/Engine Access with Gas Struts	S	S	S	S	S
<b>New</b> Sun Visor - Power Driver and Passenger Sun Visor	S	S	S	S	S
Tray - Dash Mounted Computer Tray	O	O	O	O	O
FURNITURE					
<b>New</b> Booth Dinette - Booth Dinette with Slide-out Drawers and Solid Surface Pedestal Mount Table	O	O	O	O	O
<b>New</b> Cabinet - Refreshment Centre (6 Bottle) (Only Available with Recliner on Passenger's Side)	O	O	-	-	O
<b>New</b> Chair - Ultra Leather Recliner with Flip Table	S	S	-	-	S
<b>New</b> Hide-a-Bed - Cloth Hide-a-Bed on Driver's Side with Air Coil Mattress and 110 V Air Pump	-	S	S	S	S
Hide-a-Bed - Ultra Leather Hide-a-Bed on the Driver's Side with Air Coil Mattress	O	O	O	O	O
Magic Bed - Cloth Magic Bed on Driver's Side	O	-	-	-	-
Mattress - Residential Quality Queen Bed	S	S	S	S	S
Mattress - Upgrade	O	O	O	O	O
Seat - Ultra Leather Swivel Driver's & Passenger's Captain Chairs with Integral Seat Belts - 8 Way Power	S	S	S	S	S
Seat - Ultra Leather Swivel Passenger's Captain Chair with Power Foot Rest - 8 Way Power	O	O	O	O	O
Sofa - Cloth Easy Bed with Bayonet Arms on Driver's Side	S	-	-	-	-
Sofa - Cloth Flexsteel Versaflex Lounge on Driver's Side	-	O	O	O	O
Sofa - Ultra Leather Easy Bed on Passenger's Side	O	O	-	-	O
Sofa - Ultra Leather Easy Bed with Bayonet Arms on Driver's Side	O	-	-	-	-
<b>New</b> Sofa - Ultra Leather Love Seat on Passenger's Side	-	-	S	-	-

	A3901GB	A3902FB	A3903FGB	A3904FGB	A3905FB
Sofa - Ultra Leather Versa Flex Lounge on Driver's Side	-	0	0	0	0
Table - Solid Oak Wall Mount Table with Oak Chairs (Maple, if option chosen)	S	-	-	-	-
Table - Solid Surface Table with Oak Chairs (Maple, if option chosen)	-	S	S	S	S
<b>GALLEY FEATURES</b>					
Butcher Block - Slide-out (with Cook Top only) in Lieu of Top Drawer under Cook Top	0	0	0	0	0
Coffee Maker	S	S	S	S	S
Cook Top - Recessed Cook Top c/w High Output Sealed Burner	S	S	S	S	S
Counter Top - Solid Surface Counter Top c/w Matching Cutting Board Sink Covers	S	S	S	S	S
Cover - Recessed Bi-fold Range Cover	S	S	S	S	S
Fan - Thermostatically Controlled Fan in Living Area	S	S	S	S	S
Faucets - Deluxe Single Lever Faucet	S	S	S	S	S
Flooring - Ceramic Tile Flooring	S	S	S	S	S
Flooring - Thermostatically Controlled Heating Element under Ceramic Tile in Galley	0	0	0	0	0
Micro/Convection Oven - (OTR) with 110 V Range Hood and Light	S	S	S	S	S
Oven - LP Gas Oven	0	0	0	0	0
<b>New</b> Refrigerator - Dometic Side by Side 12 cu ft with Ice Maker LP/Electric, Black Stainless Steel Doors	0	0	0	0	0
<b>New</b> Refrigerator - Dometic 2-Door 10 cu ft with Ice Maker, LP/Electric, Black Stainless Steel Doors	S	S	S	S	S
Refrigerator - Dometic Side by Side 12 cu ft with Ice Maker LP/Electric, Solid Wood Inserts	0	0	0	0	0
Sink - Recessed Solid Surface Sink	S	S	S	S	S
Water Purifier	S	S	S	S	S
<b>LAVATORY</b>					
Counter Top - Solid Surface Counter and Basin	S	S	S	S	S
Fan - Thermostatically Controlled Fan in Bath	S	S	S	S	S
Fan - Thermostatically Controlled Non-Reversible Fan in Toilet Room	S	S	S	S	S
Faucet - Deluxe Faucets	S	S	S	S	S
Flooring - Ceramic Tile Flooring	S	S	S	S	S
Flooring - Thermostatically Controlled Heating Element under Ceramic Tile in Lavatory	0	0	0	0	0
Shower - Neo Angle Fibreglass Enclosed Shower	0	0	0	0	0
Skylight - Shower Compartment	S	S	S	S	S
Toilet - Concerto China Toilet with Sprayer	S	S	S	S	S
Tub - Enclosed Fibreglass Garden Tub	S	S	S	S	S
Washer/Dryer Prep Package	S	S	S	S	S
Window - with Valance and Venetian Blind in Toilet Room	S	S	S	S	S
<b>ENTERTAINMENT</b>					
<b>New</b> CB Antenna - includes Coax Lead In under Dash	S	S	S	S	S
<b>New</b> DVD Player	0	0	0	0	0
<b>New</b> Master Control - Deluxe Audio/Video Master Control Switch Box	S	S	S	S	S
<b>New</b> Prewire - Satellite Dish Prewire (with 12 V Power)	S	S	S	S	S
<b>New</b> Satellite Dish - KVH LF In Motion - without Receiver	0	0	0	0	0
<b>New</b> Satellite Dish - KVH SF Automatic - without Receiver	0	0	0	0	0
<b>New</b> Satellite Dish - Winegard with Electronic Elevation Sensor	0	0	0	0	0
<b>New</b> Stereo - AM/FM Cassette/CD - 80 W	0	0	0	0	0
Stereo - AM/FM CD in dash Stereo with Big Buttons - 80 W	S	S	S	S	S
Stereo - AM/FM CD Stereo with 6-Stack in dash CD Changer with Big Buttons - 80 W	0	0	0	0	0
Stereo - DHS Mobile Theater System with AM/FM CD Stereo with 6-Stack in dash CD Changer with Big Buttons - 80 W	0	0	0	0	0
Stereo - Exterior AM/FM - CD Stereo with Shielded Speakers	0	0	0	0	0
Stereo - Separate AM/FM CD Stereo in Bedroom with Alarm	S	S	S	S	S
Telephone & Cable TV Hookup - Exterior	S	S	S	S	S
<b>New</b> TV - AC 20" Exterior TV in Baggage Compartment with Slide-out Tray	0	0	-	-	0

<b>New</b> TV - AC 20" Flat Screen Colour Stereo TV with Remote in Bedroom	S	S	S	S	S
<b>New</b> TV - AC 20" Flat Screen Colour Stereo TV with Remote in Overhead Console	S	-	S	-	S
<b>New</b> TV - AC 32" Flat Screen Colour Stereo TV with Remote in Entertainment Cabinet	-	S	-	S	-
TV Antenna - Roof Top Retractable Antenna with Booster and Dash-mounted "Antenna Up" Light	S	S	S	S	S
VCR - Hi-fi Video Cassette Recorder	S	S	S	S	S
<b>HEATING, VENTILATING AND AIR CONDITIONING</b>					
Air Conditioner - Dual Ducted (2) 13,500 BTU with Heat Strip	S	S	S	S	S
Furnace - 40,000 BTU Central Furnace with Electronic Ignition and in-floor Ducting	S	S	S	S	S
Heater - Dual Rear Auxiliary Automotive Heaters with Electric Valve	S	S	S	S	S
<b>ELECTRICAL</b>					
Alarm System with 2 Motion Detectors	0	0	0	0	0
Batteries - 4 x 6V Deep Cycle Auxiliary Battery with Slide-out Battery Tray	S	S	S	S	S
Bi Directional Isolator Relay Delay (BIRD) Battery Charging System	S	S	S	S	S
<b>New</b> Generator - 6.5 KW Onan Liquid LP Gas Marquis with Air Assist Slide-out and Dash-mounted Hour Meter	S	S	S	S	S
<b>New</b> Generator - 7.5 KW Onan Quiet Diesel with Air Assist Slide-out and Dash-mounted Hour Meter	0	0	0	0	0
Inverter - 2000 Watt Inverter with 100 Amp Charger	S	S	S	S	S
Panel - 50 Amp Electrical Service with Energy Management System	S	S	S	S	S
Prewire - 110 V/12 V Receptacles in Baggage Compartment (Freezer Prep)	S	S	S	S	S
<b>New</b> Prewire - for Solar Panel	S	S	S	S	S
Prewire for Power Main Awning	S	S	S	S	S
Switch - Electronic Battery Disconnect (Coach Batteries)	S	S	S	S	S
<b>PLUMBING AND LP SYSTEMS</b>					
Black Tank Flush System	S	S	S	S	S
Holder - Swing out Underbody Sewer Hose Holder	S	S	S	S	S
Holding Tanks - Enclosed and Insulated, Dual Heated Waste Holding Tanks	S	S	S	S	S
LP Tank - Easy Access Propane Tank	S	S	S	S	S
Switch - 3-Way Water Pump Switching	S	S	S	S	S
Water Heater - Electronic Ignition Gas/Electric/Motoraid Water Heater (10 Gal)	S	S	S	S	S
Water Tank - Enclosed and Insulated, Dual Heated Fresh Water Tank	S	S	S	S	S
Winterization System - with Potable Antifreeze Pick Up Tank	S	S	S	S	S
<b>SYSTEMS</b>					
Central Vacuum - with Outlet in Baggage Compartment	S	S	S	S	S
Freezer / Refrigerator - On Slide-out Tray 1.38 cu ft (AC/DC)	0	0	-	-	0
Rearview Camera/Monitor - Color LCD Display Mounted in Dash	S	S	S	S	S
Washer/Dryer (vented)	0	0	0	0	0
<b>OPTIONAL AWNING PACKAGES</b>					
<b>New</b> Awning - Weathershield Equipped A&E 2 Step - Acrylic (length shown)	18	18	18	18	18
Awning - Weathershield Equipped A&E Elite Slide Topper (number of awnings shown)	2	2	2	2	2
<b>New</b> Awning - Weathershield Equipped A&E Elite Window Awnings (main slide windows & bedroom window)	0	0	0	0	0
<b>New</b> Awning - Weathershield Equipped Weatherpro Power - Acrylic with Remote and Wind Sensor (length shown)	18	18	18	18	18
Factory P.D.I.	0	0	0	0	0
<b>SPECIAL PRESIDENTIAL DÉCOR</b>					
<b>New</b> Tuscan Spice Décor includes Antique Maple Cabinetry Refrigerator - Dometic Side by Side 12 cu ft. with Ice Maker LP/Electric, Antique Maple Inserts Genuine Distressed Leather Captain's Chairs and Recliner or Love Seat	0	0	0	0	0

# TRIPLE E QUALITY



## Unparalleled craftsmanship



Triple E is located in the centre of Canada – in one of the most extreme climates in North America. Customers can thus be confident that our

products have truly been put to the test when it comes to the elements.

Much of what you see in our products is built on site to our highest standards. In our plant you'll find an impressive, progressive production facility complete with welding shop, paint shop, fibreglass and mold shop, sewing department, and cabinet manufacturing department.

Structural integrity and durability are critical in every unit we produce – to the smallest of details. For example, cabinetry is constructed with screws rather than staples. It's the little things that make a big difference.



All Triple E products are built to CSA (Canadian Standards Association) or RVIA (Recreational Vehicle Industry Association) Standards. Triple E was one of the first RV manufacturers to obtain the ISO 9002 certification – your assurance of the careful construction and high quality materials that are part and parcel of every Triple E unit.



Triple E is proud to offer a  
**2 YEAR LIMITED WARRANTY**

on structure as well as most major components.  
Please see your dealer for further details.



This combination of labels assures the purchaser that the manufacturer has met or surpassed CSA-CRVA-RVIA standards covering electrical services, gas services, plumbing services, and vehicular safety.

Empress Motorhomes exceed 96 inches in width. In some states, 96 inches is the maximum width of vehicles travelling some or all state roads. It is the responsibility of the owner to be familiar with the road usage laws of the states in which you travel.


## COACH NET

Triple E is a proud partner of Coach Net, an extensive support program providing complete and fully paid roadside assistance, emergency road service, and special warranty support benefits that follow you throughout Canada and the US. Service is free for the first year of ownership and available at a nominal fee for subsequent years.

Coach Net's 24-hour Customer Care includes:

- Emergency roadside assistance - including tow vehicle
- Toll free technician hotline for operation and service support
- Toll free nationwide service appointment assistance
- Free custom trip routing and colour maps
- Warranty service at over 6,800 locations throughout North America
- Benefits such as free jump starts, tire changes, fuel delivery, and lock out service

Brochure pictures may be shown with optional equipment.

 Full of possibilities. Full of life. View the entire family of Triple E products at [www.tripleerv.com](http://www.tripleerv.com).



P.O. Box 1230, Winkler, MB  
Canada R6W 4C4  
Tel: (204) 325-4361  
Fax: (204) 325-5241  
[www.tripleerv.com](http://www.tripleerv.com)

TAKE FREEDOM *Further*