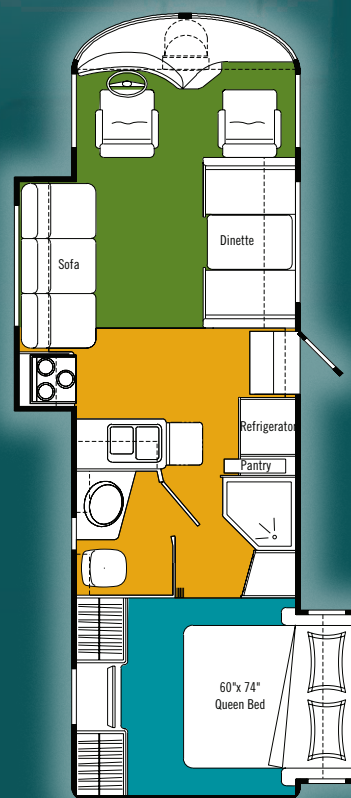


# Embassy SE



- Carpet
- Optional Carpet
- Linoleum

## STANDARDS AND OPTIONS

CHASSIS AND SUSPENSION		BEDROOM	
Airbag Assist Rear Suspension	\$	Bedspread - Decorative Bed Spread and Throw Pillows	\$
Block Heater	\$	Mattress - Innerspring 60" X 74"	\$
Chassis - Ford V-10, 6.8L V10 Triton - 18,000 lb. GVW - 190" Wheelbase	\$	Shades - Day/Night Pleated c/w Blackout	\$
Concealed Locking Fuel Filler	\$	<b>ENTERTAINMENT</b>	
Cruise Control and Tilt Steering Wheel	\$	CD Changer - 10 Stack CD Changer	0
Hitch - Trailer Hitch Receiver w/ wiring and plug - Class III 500/5000 lb	\$	Satellite Dish - Winegard with Electronic Elevation Sensor	0
Transmission - Five Speed Automatic c/w Overdrive w/ Transmission Cooler	\$	Stereo - AM/FM Weather Band Receiver with Cassette/CD Player w/ Big Button	0
Wheel Simulators	\$	Stereo - Sirius Ready AM/FM Weather Band Receiver with CD Player in Dash w/ Big Buttons	\$
<b>DRIVERS AREA CONVENIENCES</b>		Telephone and Cable TV Hook Up - Exterior	\$
Air Conditioner - Chassis	\$	TV - AC 20" Flat Screen Color Stereo c/w Remote in Front Overhead Cabinet	\$
Ash Tray - Inserts into Cup Holder in Center Console	0	TV - Flip down 15" LCD TV incl Bracket in Bedroom	0
Mirrors - Side Mounted Rear View Mirrors	\$	TV Antenna - Roof Top Retractable c/w Booster	\$
Rear View Camera/Monitor - B&W	\$	<b>HEATING VENTILATING AND AIR CONDITIONING</b>	
Seats - Optima Vinyl Reclining Driver's and Passenger's Swivel Bucket Seats	\$	Air Conditioner - Centrally Ducted 13,500 BTU w Heat Strip and Remote Ducted Return Air	\$
Switch - Battery Boost Switch	\$	Fan - Reversible Thermostatically Controlled Fantastic Fan in Galley or Living Area ILO Manual Vent	0
Wipers - Wet Arm Windshield Wipers c/w Intermittent	\$	Furnace - Forced Air Furnace - 35,000 BTU	\$
<b>VEHICULAR</b>		Vent - 12 Volt Power Roof Exhaust in Lavatory	\$
Jacks - Electric Leveling Jacks w/ Touch Pad on Dash	\$	Vent - Manual Screened Roof Vent in Galley or Living Area, and Bedroom	\$
Light - High Mounted Stoplight - LED Long Life	\$	<b>ELECTRICAL</b>	
Lights - Halogen Automotive Driving Lights	\$	30 Amp Electrical Service	\$
Undercoating - Automotive Type	\$	Batteries - Two - 6 Volt Deep Cycle Auxiliary	\$
<b>CONSTRUCTION</b>		BIRD - Bi Directional Isolator Relay Delay Battery Charging	\$
Baggage Doors - Radiused Flush Mount	\$	Converter - 120 Volt/12 Volt/55 Amp c/w Charger and Auto Changeover Switch	\$
Floor - Vacuum Bonded Insulated Steel Framed Floor Construction	\$	Generator - 4.0 KW Onan MicroQuiet	\$
Galvanized Luggage Compartments with Cargo Lining	\$	Plug - 12V Power Plug in Dash	\$
Gelcoat Fiberglass Front & Rear Masks	\$	Receptacle - Patio GFI Receptacle	\$
Roof - Domed EPDM Roof c/w Rain Gutters and Down Spouts	\$	Switch - Coach Battery Disconnect	\$
Steel Cab Floor, Firewall and Dash Structure	\$	<b>PLUMBING AND LP SYSTEMS</b>	
Vacuum Bonded Aluminum Framed Insulated Roof Construction	\$	Exterior Shower with Shut off Valves for Winterizing	\$
Vacuum Bonded Aluminum Framed Insulated Sidewall with Thermal Break	\$	LP Tank - Under Floor Mounted	\$
Vacuum Bonded Classic 50 FRP Sidewalls	\$	Water Heater - 6 USG Electronic Ignition LP /Electric	\$
Windows - Hehr Thermal Pane	\$	Water Heater By-Pass Valve	\$
<b>EXTERIOR</b>		<b>AWNINGS</b>	
Door - Screened Entry Door c/w Integral Deadbolt Lock	\$	Optional Awning Package includes:	
Exterior Assist Handle	\$	A&E 8500 Patio Awning Color Coordinated (Length Shown)	16
Ladder - Exterior Ladder	\$	A&E Deluxe Slide Topper (Number of Awnings Shown)	2
Light - Porch Light with Yellow Lens	\$	<b>SPECIAL OPTION PACKAGE(S)</b>	
Paint Around Front Cockpit Area		<b>XL PACKAGE INCLUDES:</b>	
Painted Skirts	0	Holding Tanks Enclosed, Insulated and Heated	\$
Step - Electric Entry Step	\$	Light Package in Baggage Compartment	
<b>INTERIOR</b>		Rear Auxiliary Automotive Heater	
Blind - Venetian Blind in Galley	\$	Tinted Thermal Pane Windows	
Borders - Wall Borders in Galley and Bedroom Areas	\$	<b>CUSTOMER VALUE PACKAGE</b> (Mandatory Option)	M
Ceiling - Flat with Padded Vinyl Headliner	\$	DVD / VCR Combination Unit	0
Detectors - Electronic Smoke, LP and CO Detectors	\$	Fan - Reversible Fantastic Thermostatically Controlled Ceiling Fan (Bedroom) ILO Manual Vent	0
Doors - Raised Solid Oak Cabinet Doors	\$	Prewire - Satellite Dish (with 12V Power, Ground, RG-6 Coax and Fish Wire) and Switch Box	0
Drawers - Full Extension Ball Bearing Drawer Tracks	\$	Refrigerator Inserts - Oak Framed Raised Panel Fridge Inserts	0
Fire Extinguisher - Dry Chemical	\$	Rust Protection	0
Flooring - Carpet in Living Area as per Floor plan	0	<b>SPECIFICATIONS</b>	<b>A306BSE</b>
Flooring - Lino in Living Area, Galley and Lavatory and Carpet in Bedroom Areas	\$	GVWR - lbs (kg)	18000(8164)
Shades - Day/Night Pleated Shades	\$	UVW - lbs (kg)	14290(6484)
Slide Out - Lift Co Electric Slide Out System in Living Area and Bedroom	\$	NCC - lbs (kg)	3710(1680)
<b>FURNITURE</b>		Wheelbase - in (mm)	190(4826)
Booth Dinette - Steel Framing for Seat Belts	\$	Length - ft (mm)	307"(9331)
Sofa - Cloth Jackknife Sofa w/Bayonet Arms	\$	Width - ft (mm)	8'4"(2534)
<b>GALLEY</b>		Height Incl. A/C - ft (mm)	11'9"(3581)
Bi-fold Range Cover	\$	Water Tank Capacity - gal (l)	49(186)
Countertop - Laminate Counter with Solid Oak Edge w/ Acrylic Sink and Cutting Board Sink Cover	\$	Holding Tank Capacity - gal (l)	78(295)
Faucet - Galley Faucet	\$	Fuel Capacity - gal (l)	75(284)
Microwave - OTR c/w Light and Vent Fan	\$	Propane Capacity - gal (l)	25.3(95.8)
Range - Three (3) Burner Cook Top w/ High Output Burner & 22" Oven	\$	All Capacities in U.S. Gallons	
Refrigerator - Dometic LP/Electric 8 Cu. Ft.	\$		
<b>LAVATORY</b>			
Shower - Neo Angle Shower with Acrylic Doors	\$		
Sink - Acrylic Sink in Laminate Counter with Laminate Edge	\$		
Skylight - Residential Neo Angle in Shower	\$		
Toilet - Sealand Traveler Lite w/ Sprayer - China - Foot Flush	\$		



Triple E Recreational Vehicles P.O. Box 1230, Winkler, Manitoba, Canada R6W 4C4 Telephone: (204) 325-4361 Fax: (204) 325-5241

Triple E Recreational Vehicles meet or surpass CSA-CRVA-RVIA standards covering electrical services, gas services, plumbing services and vehicular safety. Embassy Motorhomes exceed 96" in width. In some states, 96" is the maximum width of vehicles travelling some or all state roads. It is the responsibility of the owner to be familiar with the road usage laws of the states in which you travel. Product improvement is a continuing process at Triple E Recreational Vehicles. Thus, we reserve the right to change specifications on any or all products without prior notice; errors and omissions excepted. Triple E Recreational Vehicles is under no obligation to undertake modification to units manufactured prior to changes on specifications. Brochure pictures may be shown with optional equipment. Colours may not be exactly as shown due to the printing process. Please see your dealer for specific colours.